

IRIS Asset Map and GIS to IRIS Workflow Guide

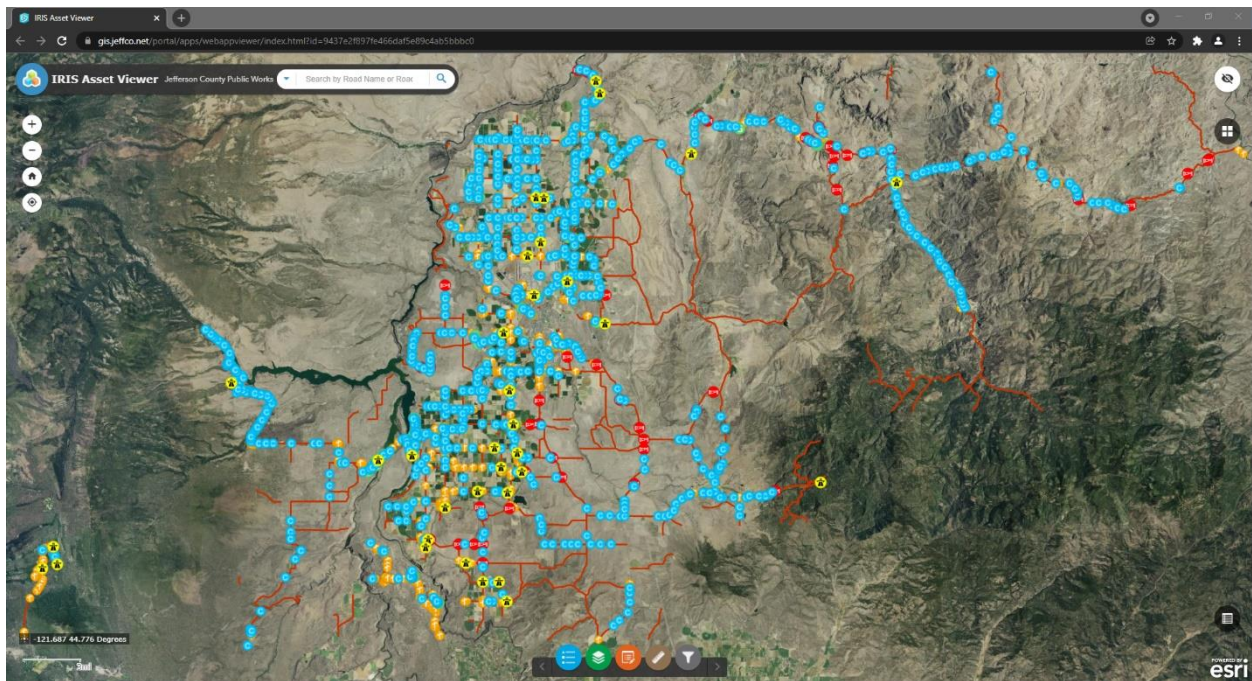
For Jefferson County Public Works

Web Application Basic Functions

Begin by opening the 'IRIS Asset Viewer' Map and logging in with your credentials if prompted.

To access the map, click the following link:

<https://gis.jeffco.net/portal/apps/webappviewer/index.html?id=9437e2f897fe466daf5e89c4ab5bbbc0>



1. Zoom & Pan Navigation



Zoom (upper left corner of the map view, below the map title)

Using the mouse wheel is the quickest way to zoom in and out of the map. Pushing the wheel away from you will zoom the map **in** and pulling the mouse wheel toward you will zoom the map **out**.

Use the plus/minus toggle in the lower left of the map view next to the search window as an alternative to scrolling with the mouse wheel.

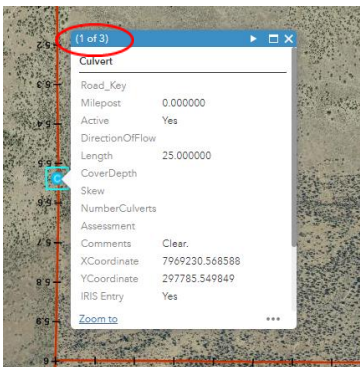
Pan

To pan within the map, use the left mouse button by holding it down and moving the mouse in the direction you would like to view the map.

Identify & Pop-Up

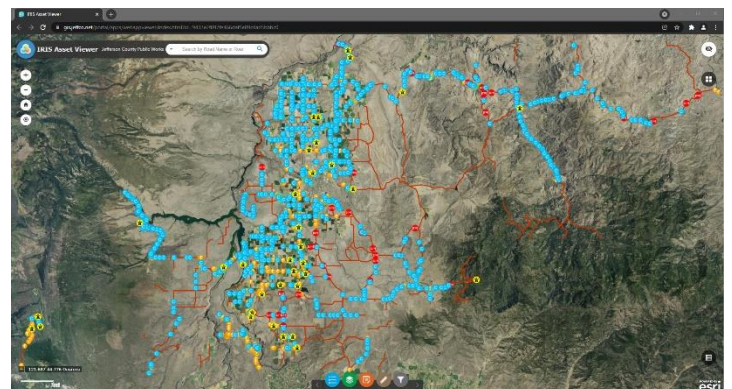
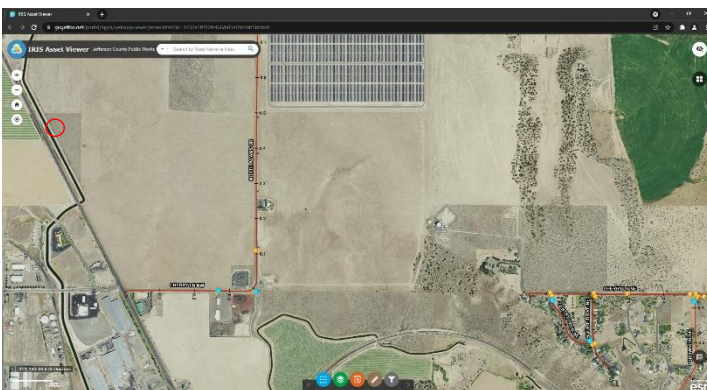
To identify any feature in the map, click on it or in it with the mouse cursor and a pop-up will appear.

Within the pop-up window, in the upper left-hand corner, the number in the parenthesis will indicate how many map features have been info'ed on.



2. **Home**

To return to the default extent of the map, click the house icon directly below the zoom buttons in the upper left corner of the map view.



3. User Location Indicator



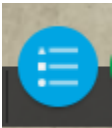
(In the upper left of the map view below the *Home* button)

Will zoom the map view to the user's location.

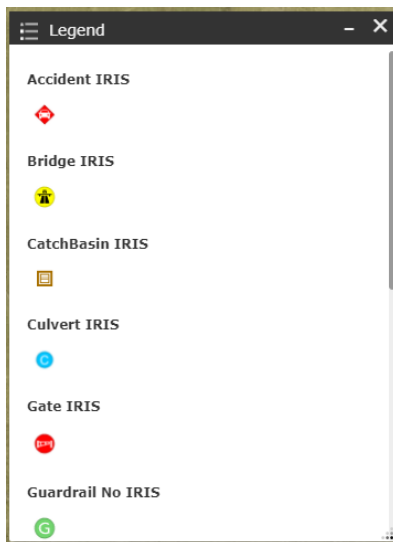
The location will be indicated by blue circle with a white outline:



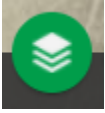
4. Legend



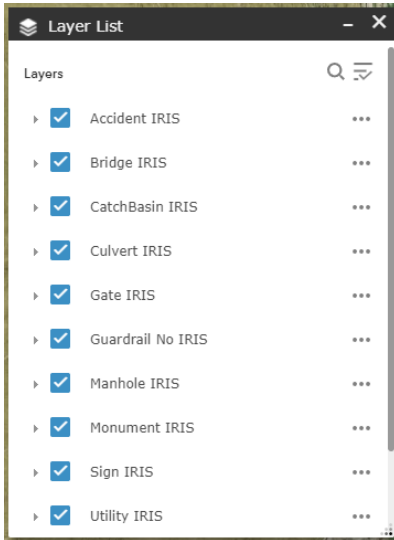
Click the *Legend* icon to expand the *Legend* view. The *Legend* is organized by the order of the dataset order within the *Layer List*. Only those layers that are turned on, or where the map is zoomed in far enough to activate the rendering, are visible within the *Legend*.



5. Layer List



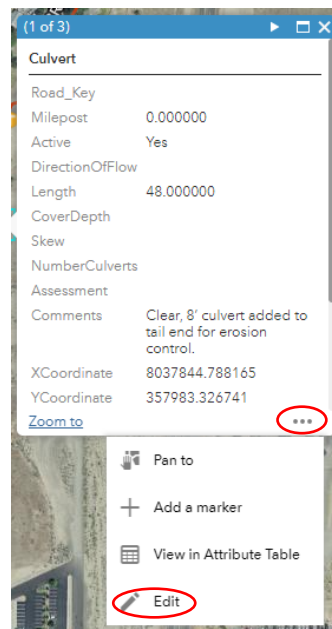
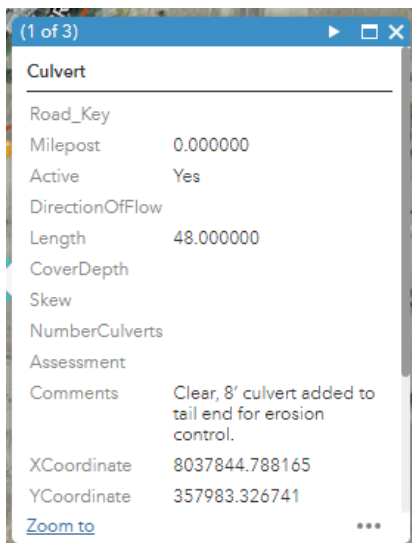
Click the *Layer List* icon to see the *Layer List*. A pop-up window with all available data layers will appear.



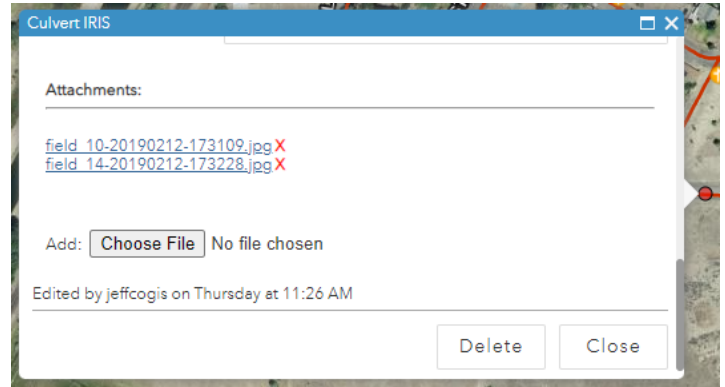
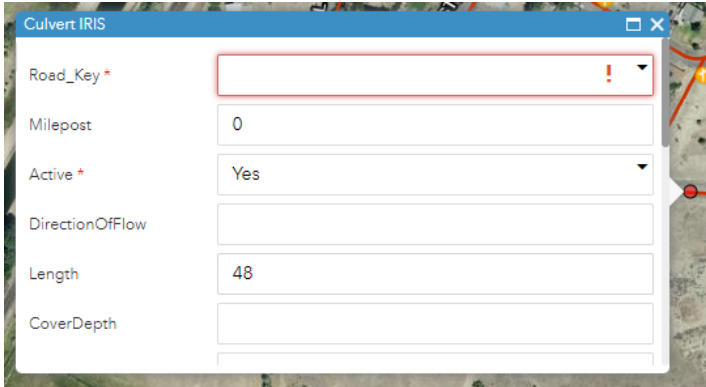
6. Edit

To edit an exist feature, begin by clicking it to bring up the info pop-up. Scroll through other selected features if more than one is selected using the workflow in the pop-up section.

Next, click the three-dot ellipsis in the lower right hand corner of the pop-up window, and click 'Edit'.



A window will pop up where you can edit the current attributes for that feature, or delete the feature. When finished, click the 'x' to close the window.



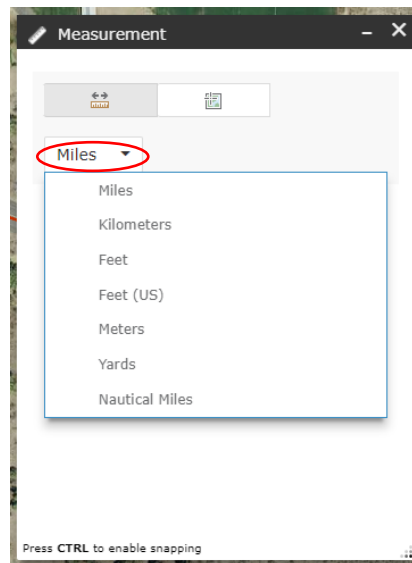
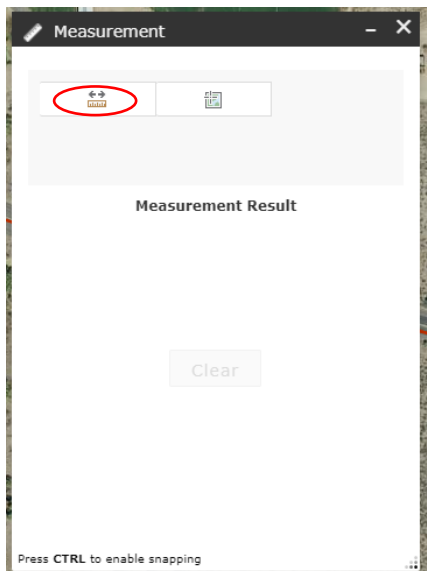
7. Measurement

To measure distances or obtain coordinates from a point on the map, click the ruler icon.

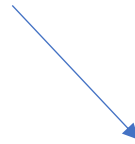


Distance

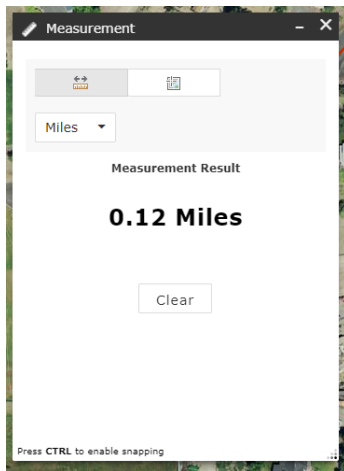
To measure distances, click the ruler within the tool window. Select the desired measurement units from the drop-down menu.



To begin measuring a distance, place the cursor in desired start location and left click once (do not hold mouse button down). Drag the mouse, then left click in the desired location at the end to establish the intended distance measurement. Double click to finish.



Resulting measurements will be displayed in the Measurement window



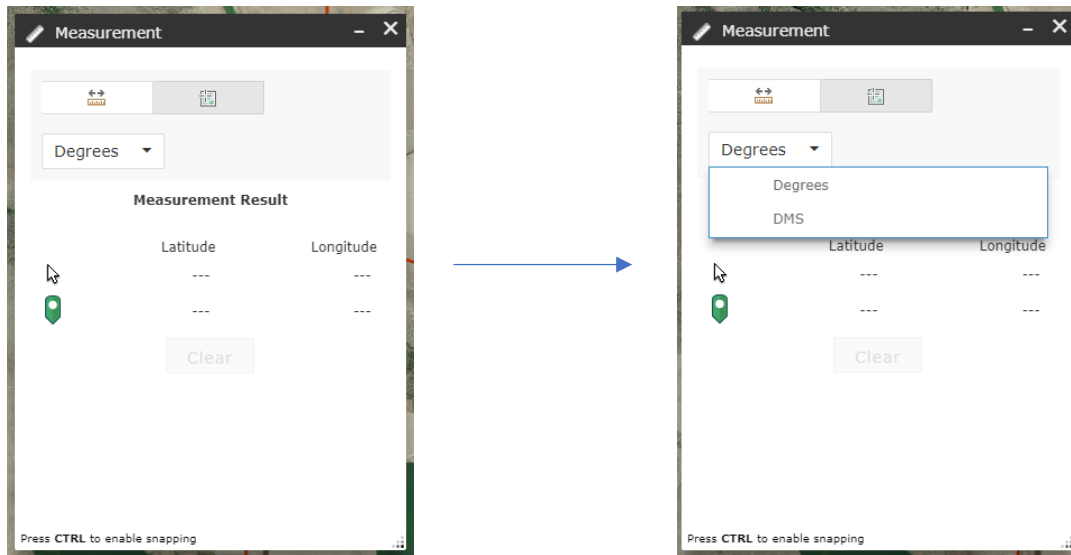
To measure a multi-directional line, keep left clicking the mouse along the desired course.

To finish drawing the desired course or distance, double click with the left mouse button in the last location to terminate the draw.

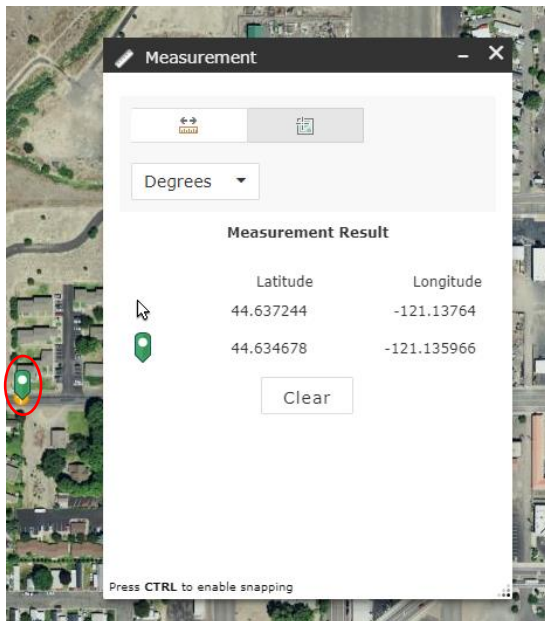


Location

With the Location button selected, the choice for units are Decimal Degrees and DMS (Degrees, Minutes, Seconds). These can be found in the drop-down menu below the buttons.



Click anywhere on the map to drop a point and see the coordinates. The top set of coordinates show where the cursor is currently hovering, and the bottom set show the coordinates of the point that was just dropped.



****Note****

For increased accuracy with the measurement tools, you can “snap” to desired features. To perform snapping, press and hold the Ctrl key and hover over the desired feature until you see the cursor attach itself to the feature. Blue crosshairs will appear over the feature when this happens.



GIS to IRIS Workflow

For new assets that have been added by field staff, click the ‘Filter’ tool, and turn on the filter for which ever asset has been collected. Only records that have **not** been entered into IRIS will now be visible.

