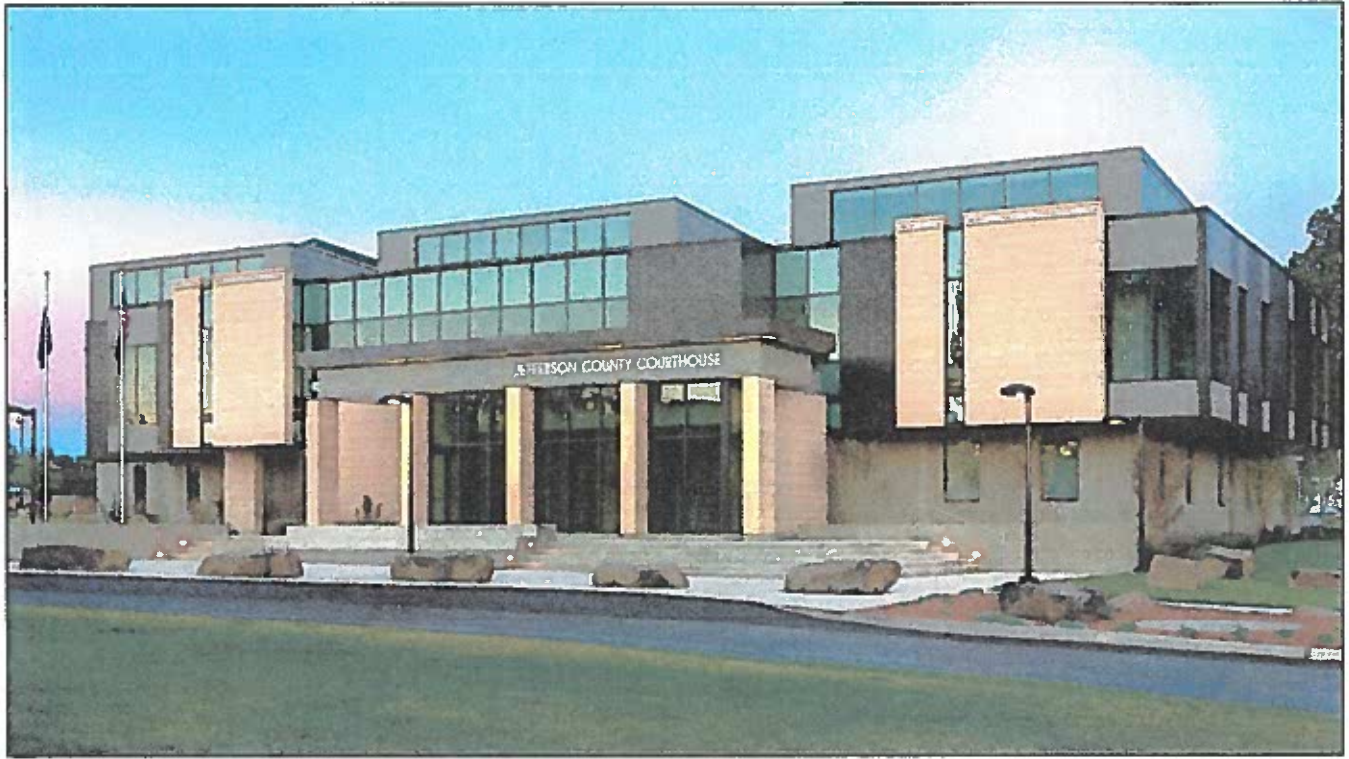


JEFFERSON COUNTY, OREGON

SUMMARY OF ASSESSMENT & TAX ROLL 2017-2018




Est. 2016

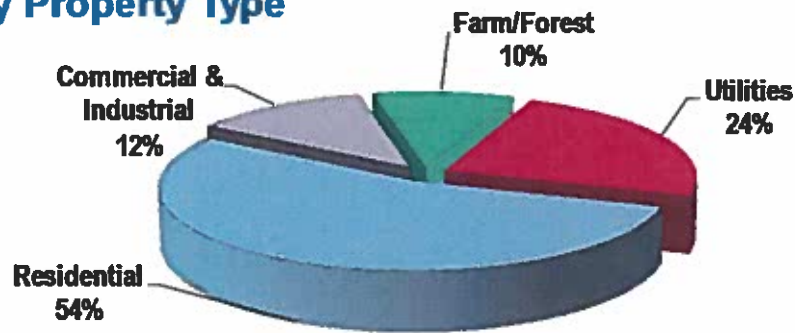
	2017-18	2016-17
	Assessed Value	Assessed Value
Real Property	1,256,765,015	1,203,139,994
Personal Manufactured Structures	6,443,083	6,584,969
Personal Property.....	26,194,660	23,774,550
Utilities.....	<u>401,789,861</u>	<u>403,551,570</u>
	TOTAL	1,637,051,083
	1,691,192,619	

I, Jean McCloskey, Assessor for Jefferson County, State of Oregon, do hereby certify the assessed valuation, tax levies, and taxes set forth in the summary herein contained, are true and correct copies of the whole thereof, as the same appears on file in my office and custody.

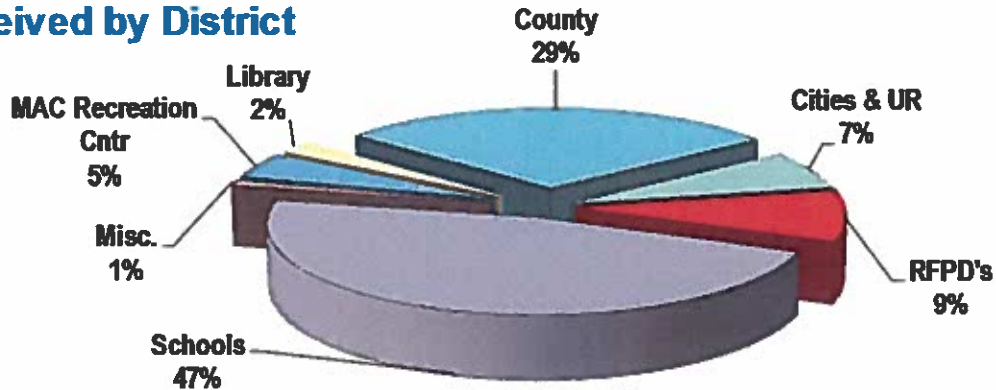
Dated this 2nd day of October, 2017


JEAN McCLOSKEY
 ASSESSOR

Taxes Paid by Property Type



Taxes Received by District



2017 Top 20 Taxpayers for Jefferson County

Owner Name	Tax Amount	Assessed Value
1. Portland General Electric Company	\$3,423,743.65	\$243,160,200
2. Gas Transmission Northwest Corporation	554,194.65	41,555,600
3. PacifiCorp	514,097.29	32,936,000
4. Bright Wood Corporation	379,043.20	20,838,790
5. Warm Springs Power Enterprises	225,293.92	16,000,000
6. BNSF Railway Company	184,629.51	12,042,800
7. Keith Manufacturing, Inc./Keith Investments	182,735.88	9,992,080
8. Safeway, Inc.	133,930.86	6,806,070
9. Union Pacific Railroad Company	128,072.01	8,110,000
10. Centurylink	95,098.94	5,845,000
11. Ponderosa Land & Cattle Company, LLC	90,374.42	2,388,076
12. Sweetwater Holdings, LLC	88,865.99	4,920,280
13. Helena Chemical Company	88,125.94	5,039,860
14. East Cascade Retirement	84,600.37	4,607,320
15. Verizon Communications	77,136.01	5,079,220
16. Central Oregon Seed, Inc.	66,800.92	3,648,470
17. Puget Sound Energy, Inc.	66,593.74	4,816,000
18. Aero Air, LLC, dba Erickson Aero Tanker	63,054.01	3,452,990
19. Karoma Properties, LLC	58,608.12	3,009,340
20. Mid-Columbia Real Estate	55,574.92	3,219,320

Code Districts by Area

10	City of Madras	200	Haystack Area
15	Urban Renewal / City of Madras	220	Grandview, Haystack, Grizzly, SD#4
20	City of Madras w/DVWD	221	CRR Area, SD #4, w/CRR Road District
21	Special Exemption District	222	North of Deschutes County, SD#6
25	Urban Renewal / City of Madras w/DVWD	230	W of Opal City, S of Haystack & Juniper Butte, SD#2J
40	Warm Springs Reservation	232	W of Opal City, S of Haystack, SD#2J, w/RFPD
70	North, East & West County, w/DVWD	233	Three Rivers, Lake Chinook RFPD
80	Outlying Madras - Metolius, w/RFPD	234	CRR Area, SD #4, Outside CRR Road District
90	North, East & West County	240	South Culver, Hwy 97, SD#2J, w/RFPD
110	Outlying Madras - Metolius, w/DVWD, w/RFPD	270	CRR Area, SD #2J, w/CRR Road District
140	City of Metolius	272	CRR Area, SD #2J, Outside CRR Road District
150	City of Culver	290	Opal City Area, SD#2J
151	Urban Renewal / City of Culver	310	Camp Sherman
160	Outlying Culver, SD#4, w/DVWD	312	Camp Sherman, w/RFPD
170	Outlying Culver, SD#4, w/DVWD, w/RFPD	350	Ashwood
172	Juniper Butte Road District		

Jefferson County Taxing District Bonds & Local Option Levies

District Name	First Year	Year of Maturity
Central Oregon Community College Bond	2010	2031-2032
Crooked River Ranch RFPD Bond	2007	2032-2033
Lake Chinook Fire & Rescue Bond	2014	2044-2045
MAC Recreation District Bond	2005	2026-2027
School District #4 Culver Bond	2014	2030-2031
School District #509J Madras Bond	2013	2034-2035
School District #2J Redmond Bond	2009	2035-2036
School District #6 Sisters Bond	2000	2021-2022
School District #6 Sisters Bond	2016	2030-2031
Sisters-Camp Sherman RFPD Bond	2007	2027-2028

Local Option Levies	First Year	Expiration Date
Camp Sherman Road District #18 Local Option Levy	2015	2017-2018
Crooked River Ranch RFPD Local Option Levy	2014	2018-2019
Jefferson County Jail Local Option Levy	2014	2018-2019
MAC Recreation District Local Option Levy	2013	2017-2018
School District #6 Sisters Local Option Levy	2013	2017-2018

2017-2018 BILLING RATES

<u>CODE 10</u>		<u>CODE 21</u>		<u>CODE 70</u>		<u>CODE 110</u>	
REAL MARKET VALUE	\$143,602,704	REAL MARKET VALUE	\$4,634,150	REAL MARKET VALUE	\$69,921,521	REAL MARKET VALUE	\$472,392,399
Taxable Valuation	\$104,167,537	Taxable Valuation	\$4,593,550	Taxable Valuation	\$41,317,992	Taxable Valuation	\$253,041,554
County General Levy	3.2960	County General Levy	3.2960	County General Levy	3.5662	County General Levy	3.5662
County Jail LOL*	1.2400	County Jail LOL*	1.2400	County Jail LOL*	1.2400	County Jail LOL*	1.2400
County Library Levy	0.4020	County Library Levy	0.4020	County Library Levy	0.4349	County Library Levy	0.4349
Jefferson Co. RFPD Levy	1.0950	Jefferson Co. RFPD Levy	1.0950	COCC Levy	0.6204	Jefferson Co. RFPD Levy	1.1847
Madras - City Levy	3.8136	Madras - City Levy	3.8136	COCC Bond	0.1206	COCC Levy	0.6204
Madras - Urban Renewal	1.1369	Madras - Urban Renewal	1.1369	Jefferson Co. ESD Levy	0.2398	COCC Bond	0.1206
COCC Levy	0.5734	COCC Levy	0.5734	SD#509J Madras Levy	4.5871	Jefferson Co. ESD Levy	0.2398
COCC Bond	0.1206	COCC Bond	0.1206	SD#509J Madras Bond	2.5013	SD#509J Madras Levy	4.5871
Jefferson Co. ESD Levy	0.2217	Jefferson Co. ESD Levy	0.2217	MAC Recreation Dist. Levy	0.2500	SD#509J Madras Bond	2.5013
SD#509J Madras Levy	4.2396	SD#509J Madras Levy	4.2396	MAC Recreation Dist. LOL*	0.4000	MAC Recreation Dist. Levy	0.2500
SD#509J Madras Bond	2.5013	SD#509J Madras Bond	2.5013	MAC Recreation Dist. Bond	0.6388	MAC Recreation Dist. LOL*	0.4000
MAC Recreation Dist. Levy	0.2311	MAC Recreation Dist. Levy	0.2311	Deschutes Valley Wtr. Dist.	0.0000	MAC Recreation Dist. Bond	0.6388
MAC Recreation Dist. LOL*	0.4000	MAC Recreation Dist. LOL*	0.4000	<u>M50 BILLING RATE</u>	<u>14.5991</u>	Deschutes Valley Wtr. Dist.	0.0000
MAC Recreation Dist. Bond	0.6388	MAC Recreation Dist. Bond	0.6388			<u>M50 BILLING RATE</u>	<u>15.7838</u>
<u>M50 BILLING RATE</u>	<u>19.9100</u>	<u>M50 BILLING RATE</u>	<u>19.9100</u>				

<u>CODE 15</u>		<u>CODE 25</u>		<u>CODE 80</u>		<u>CODE 140</u>	
REAL MARKET VALUE	\$52,627,994	REAL MARKET VALUE	\$40,009,067	REAL MARKET VALUE	\$109,565,494	REAL MARKET VALUE	\$39,418,180
Taxable Valuation	\$41,119,509	Taxable Valuation	\$27,408,893	Taxable Valuation	\$43,613,868	Taxable Valuation	\$28,378,121
County General Levy	3.2960	County General Levy	3.2960	County General Levy	3.5662	County General Levy	3.5662
County Jail LOL*	1.2400	County General Levy	3.2960	County Jail LOL*	1.2400	County Jail LOL*	1.2400
County Library Levy	0.4020	County Jail LOL*	1.2400	County Library Levy	0.4349	County Library Levy	0.4349
Jefferson Co. RFPD Levy	1.0950	County Library Levy	0.4020	Jefferson Co. RFPD Levy	1.1847	Jefferson Co. RFPD Levy	1.1847
Madras - City Levy	3.8136	Jefferson Co. RFPD Levy	1.0950	COCC Levy	0.6204	Metolius - City Levy	3.6296
Madras - Urban Renewal	1.1369	Madras - City Levy	3.8136	COCC Bond	0.1206	COCC Levy	0.6204
COCC Levy	0.5734	Madras - Urban Renewal	1.1369	Jefferson Co. ESD Levy	0.2398	COCC Bond	0.1206
COCC Bond	0.1206	COCC Levy	0.5734	SD#509J Madras Levy	4.5871	Jefferson Co. ESD Levy	0.2398
Jefferson Co. ESD Levy	0.2217	COCC Bond	0.1206	SD#509J Madras Bond	2.5013	SD#509J Madras Levy	4.5871
SD#509J Madras Levy	4.2396	Jefferson Co. ESD Levy	0.2217	MAC Recreation Dist. Levy	0.2500	SD#509J Madras Bond	2.5013
SD#509J Madras Bond	2.5013	SD#509J Madras Levy	4.2396	MAC Recreation Dist. LOL*	0.4000	MAC Recreation Dist. Levy	0.2500
MAC Recreation Dist. Levy	0.2311	SD#509J Madras Bond	2.5013	MAC Recreation Dist. Bond	0.6388	MAC Recreation Dist. LOL*	0.4000
MAC Recreation Dist. LOL*	0.4000	MAC Recreation Dist. Levy	0.2311	<u>M50 BILLING RATE</u>	<u>15.7838</u>	MAC Recreation Dist. Bond	0.6388
MAC Recreation Dist. Bond	0.6388	MAC Recreation Dist. LOL*	0.4000			Deschutes Valley Wtr. Dist.	0.0000
<u>M50 BILLING RATE</u>	<u>19.9100</u>	MAC Recreation Dist. Bond	0.6388			<u>M50 BILLING RATE</u>	<u>19.4134</u>
		Deschutes Valley Wtr. Dist.	0.0000				
		<u>M50 BILLING RATE</u>	<u>19.9100</u>				

<u>CODE 20</u>		<u>CODE 40</u>		<u>CODE 90</u>		<u>CODE 150</u>	
REAL MARKET VALUE	\$216,438,443	REAL MARKET VALUE	\$111,222,593	REAL MARKET VALUE	\$267,068,892	REAL MARKET VALUE	\$77,649,070
Taxable Valuation	\$174,751,702	Taxable Valuation	\$110,427,620	Taxable Valuation	\$166,661,172	Taxable Valuation	\$53,104,620
County General Levy	3.2960	County General Levy	3.5662	County General Levy	3.5662	County General Levy	3.3867
County Jail LOL*	1.2400	County General Levy	3.5662	County Jail LOL*	1.2400	County Jail LOL*	1.2400
County Library Levy	0.4020	County Jail LOL*	1.2400	County Library Levy	0.4349	County Library Levy	0.4130
Jefferson Co. RFPD Levy	1.0950	County Library Levy	0.4349	COCC Levy	0.6204	Culver - City Levy	5.9489
Madras - City Levy	3.8136	COCC Levy	0.6204	COCC Bond	0.1206	Culver - Urban Renewal	0.8055
Madras - Urban Renewal	1.1369	COCC Bond	0.1206	Jefferson Co. ESD Levy	0.2398	COCC Levy	0.5892
COCC Levy	0.5734	Jefferson Co. ESD Levy	0.2398	SD#509J Madras Levy	4.5871	COCC Bond	0.1206
COCC Bond	0.1206	SD#509J Madras Levy	4.5871	SD#509J Madras Bond	2.5013	Jefferson Co. ESD Levy	0.2278
Jefferson Co. ESD Levy	0.2217	SD#509J Madras Bond	2.5013	MAC Recreation Dist. Levy	0.2500	SD#4 Culver Levy	4.6311
SD#509J Madras Levy	4.2396	MAC Recreation Dist. Levy	0.2500	MAC Recreation Dist. LOL*	0.4000	SD#4 Culver Bond	2.1379
SD#509J Madras Bond	2.5013	MAC Recreation Dist. LOL*	0.4000	MAC Recreation Dist. Bond	0.6388	Deschutes Valley Wtr. Dist.	0.0000
MAC Recreation Dist. Levy	0.2311	MAC Recreation Dist. Bond	0.6388	<u>M50 BILLING RATE</u>	<u>14.5991</u>	<u>M50 BILLING RATE</u>	<u>19.5007</u>
MAC Recreation Dist. LOL*	0.4000	<u>M50 BILLING RATE</u>	<u>14.5991</u>				
MAC Recreation Dist. Bond	0.6388						
Deschutes Valley Wtr. Dist.	0.0000						
<u>M50 BILLING RATE</u>	<u>19.9100</u>						

*LOL means "Local Option Levy"

<u>CODE 151</u>	
REAL MARKET VALUE	\$13,116,080
Taxable Valuation	\$10,441,930
County General Levy	3.3867
County Jail LOL*	1.2400
County Library Levy	0.4130
Culver - City Levy	5.9489
Culver - Urban Renewal	0.8055
COCC Levy	0.5892
COCC Bond	0.1206
Jefferson Co. ESD Levy	0.2278
SD#4 Culver Levy	4.6311
SD#4 Culver Bond	2.1379
Deschutes Valley Wtr. Dist.	0.0000
<u>M50 BILLING RATE</u>	<u>19.5007</u>

<u>CODE 200</u>	
REAL MARKET VALUE	\$15,259,091
Taxable Valuation	\$6,192,439
County General Levy	3.5662
County Jail LOL*	1.2400
County Library Levy	0.4349
Jefferson Co. RFPD Levy	1.1847
COCC Levy	0.6204
COCC Bond	0.1206
Jefferson Co. ESD Levy	0.2398
SD#4 Culver Levy	4.8766
SD#4 Culver Bond	2.1379
<u>M50 BILLING RATE</u>	<u>14.4211</u>

<u>CODE 230</u>	
REAL MARKET VALUE	\$18,071,858
Taxable Valuation	\$8,723,732
County General Levy	3.5662
County Jail LOL*	1.2400
COCC Levy	0.6204
COCC Bond	0.1206
High Desert ESD Levy	0.0964
SD#2J Redmond Levy	5.0251
SD#2J Redmond Bond	2.4490
<u>M50 BILLING RATE</u>	<u>13.1177</u>

<u>CODE 240</u>	
REAL MARKET VALUE	\$20,940,116
Taxable Valuation	\$9,322,029
County General Levy	3.5662
County Jail LOL*	1.2400
Jefferson Co. RFPD Levy	1.1847
COCC Levy	0.6204
COCC Bond	0.1206
High Desert ESD Levy	0.0964
SD#2J Redmond Levy	5.0251
SD#2J Redmond Bond	2.4490
<u>M50 BILLING RATE</u>	<u>14.3024</u>

<u>CODE 160</u>	
REAL MARKET VALUE	\$4,406,350
Taxable Valuation	\$2,473,348
County General Levy	3.5662
County Jail LOL*	1.2400
County Library Levy	0.4349
COCC Levy	0.6204
COCC Bond	0.1206
Jefferson Co. ESD Levy	0.2398
SD#4 Culver Levy	4.8766
SD#4 Culver Bond	2.1379
Deschutes Valley Wtr. Dist.	0.0000
<u>M50 BILLING RATE</u>	<u>13.2364</u>

<u>CODE 220</u>	
REAL MARKET VALUE	\$105,418,146
Taxable Valuation	\$52,176,409
County General Levy	3.5662
County Jail LOL*	1.2400
County Library Levy	0.4349
COCC Levy	0.6204
COCC Bond	0.1206
Jefferson Co. ESD Levy	0.2398
SD#4 Culver Levy	4.8766
SD#4 Culver Bond	2.1379
<u>M50 BILLING RATE</u>	<u>13.2364</u>

<u>CODE 232</u>	
REAL MARKET VALUE	\$3,991,820
Taxable Valuation	\$1,719,197
County General Levy	3.5662
County Jail LOL*	1.2400
Redmond RFPD Levy	1.7542
COCC Levy	0.6204
COCC Bond	0.1206
High Desert ESD Levy	0.0964
SD#2J Redmond Levy	5.0251
SD#2J Redmond Bond	2.4490
<u>M50 BILLING RATE</u>	<u>14.8719</u>

<u>CODE 270</u>	
REAL MARKET VALUE	\$417,161,705
Taxable Valuation	\$232,444,586
County General Levy	3.5662
County Jail LOL*	1.2400
CRR RFPD Levy	1.8379
CRR RFPD LO Levy*	0.6900
CRR RFPD Bond	0.3431
CRR Special Road Levy	0.8140
COCC Levy	0.6204
COCC Bond	0.1206
High Desert ESD Levy	0.0964
SD#2J Redmond Levy	5.0251
SD#2J Redmond Bond	2.4490
<u>M50 BILLING RATE</u>	<u>16.8027</u>

<u>CODE 170</u>	
REAL MARKET VALUE	\$144,350,748
Taxable Valuation	\$64,671,466
County General Levy	3.5662
County Jail LOL*	1.2400
County Library Levy	0.4349
Jefferson Co. RFPD Levy	1.1847
COCC Levy	0.6204
COCC Bond	0.1206
Jefferson Co. ESD Levy	0.2398
SD#4 Culver Levy	4.8766
SD#4 Culver Bond	2.1379
Deschutes Valley Wtr. Dist.	0.0000
<u>M50 BILLING RATE</u>	<u>14.4211</u>

<u>CODE 221</u>	
REAL MARKET VALUE	\$116,144,797
Taxable Valuation	\$67,516,399
County General Levy	3.5662
County Jail LOL*	1.2400
County Library Levy	0.4349
CRR RFPD Levy	1.8379
CRR RFPD LOL*	0.6900
CRR RFPD Bond	0.3431
CRR Special Road Levy	0.8140
COCC Levy	0.6204
COCC Bond	0.1206
Jefferson Co. ESD Levy	0.2398
SD#4 Culver Levy	4.8766
SD#4 Culver Bond	2.1379
<u>M50 BILLING RATE</u>	<u>16.9214</u>

<u>CODE 233</u>	
REAL MARKET VALUE	\$128,613,957
Taxable Valuation	\$68,553,723
County General Levy	3.5662
County Jail LOL*	1.2400
County Library Levy	0.4349
Lake Chinook RFPD Levy	1.6500
Lake Chinook RFPD Bond	0.6190
COCC Levy	0.6204
COCC Bond	0.1206
Jefferson Co. ESD Levy	0.2398
SD#4 Culver Levy	4.8766
SD#4 Culver Bond	2.1379
<u>M50 BILLING RATE</u>	<u>15.5054</u>

<u>CODE 272</u>	
REAL MARKET VALUE	\$7,807,480
Taxable Valuation	\$3,401,740
County General Levy	3.5662
County Jail LOL*	1.2400
CRR RFPD Levy	1.8379
CRR RFPD LOL*	0.6900
CRR RFPD Bond	0.3431
COCC Levy	0.6204
COCC Bond	0.1206
High Desert ESD Levy	0.0964
SD#2J Redmond Levy	5.0251
SD#2J Redmond Bond	2.4490
<u>M50 BILLING RATE</u>	<u>15.9887</u>

<u>CODE 172</u>	
REAL MARKET VALUE	\$19,203,725
Taxable Valuation	\$11,107,806
County General Levy	3.5662
County Jail LOL*	1.2400
County Library Levy	0.4349
Jefferson Co. RFPD Levy	1.1847
Juniper Butte Road District	0.9385
COCC Levy	0.6204
COCC Bond	0.1206
Jefferson Co. ESD Levy	0.2398
SD#4 Culver Levy	4.8766
SD#4 Culver Bond	2.1379
Deschutes Valley Wtr. Dist.	0.0000
<u>M50 BILLING RATE</u>	<u>15.3596</u>

<u>CODE 222</u>	
REAL MARKET VALUE	\$613,820
Taxable Valuation	\$573,120
County General Levy	3.5662
County Jail LOL*	1.2400
COCC Levy	0.6204
COCC Bond	0.1206
High Desert ESD Levy	0.0964
SD#6 Sisters Levy	4.0997
SD#6 Sisters LOL*	0.7500
SD#6 Sisters Bond-2000	1.0169
SD#6 Sisters Bond-2016	0.3974
<u>M50 BILLING RATE</u>	<u>11.9076</u>

<u>CODE 234</u>	
REAL MARKET VALUE	\$61,330
Taxable Valuation	\$1,350
County General Levy	3.5662
County Jail LOL*	1.2400
County Library Levy	0.4349
CRR RFPD Levy	1.8379
CRR RFPD LOL*	0.6900
CRR RFPD Bond	0.3431
COCC Levy	0.6204
COCC Bond	0.1206
Jefferson Co. ESD Levy	0.2398
SD#4 Culver Levy	4.8766
SD#4 Culver Bond	2.1379
<u>M50 BILLING RATE</u>	<u>16.1074</u>

<u>CODE 290</u>	
REAL MARKET VALUE	\$821,907
Taxable Valuation	\$507,679
County General Levy	3.5662
County Jail LOL*	1.2400
Jefferson Co. RFPD Levy	1.1847
COCC Levy	0.6204
COCC Bond	0.1206
High Desert ESD Levy	0.0964
SD#2J Redmond Levy	5.0251
SD#2J Redmond Bond	2.4490
Deschutes Valley Wtr. Dist.	0.0000
<u>M50 BILLING RATE</u>	<u>14.3024</u>

2017-2018 BILLING RATES

<u>CODE 310</u>		<u>CODE 312</u>		<u>CODE 350</u>	
REAL MARKET VALUE	\$14,208,440	REAL MARKET VALUE	\$160,848,854	REAL MARKET VALUE	\$210,882,000
Taxable Valuation	\$2,792,869	Taxable Valuation	\$89,263,066	Taxable Valuation	\$10,723,593
County General Levy	3.5662	County General Levy	3.5662	County General Levy	3.5662
County Jail LOL*	1.2400	County Jail LOL*	1.2400	County Jail LOL*	1.2400
County Library Levy	0.4349	County Library Levy	0.4349	County Library Levy	0.4349
COCC Levy	0.6204	Sisters-Cmp Shr RFPD Levy	2.7317	COCC Levy	0.6204
COCC Bond	0.1206	Sisters-Cmp Shr RFPD Bond	0.1991	COCC Bond	0.1206
Jefferson Co. ESD Levy	0.2398	Desch Co. 911 Levy	0.3618	Jefferson Co. ESD Levy	0.2398
SD#41 Black Butte Levy	3.0137	Camp Sher Rd Dist 18 Levy	0.1389	SD#8 Ashwood Levy	0.0000
Desch Co. 911 Levy	0.3618	Camp Sher Rd Dist 18 LOL*	0.2000	<i>M50 BILLING RATE</i>	6.2219
Camp Sher Rd Dist 18 Levy	0.1389	COCC Levy	0.6204		
Camp Sher Rd Dist 18 LOL*	0.2000	COCC Bond	0.1206		
<i>M50 BILLING RATE</i>	9.9363	Jefferson Co. ESD Levy	0.2398		
		SD#41 Black Butte Levy	3.0137		
		<i>M50 BILLING RATE</i>	12.8671		

*LOL means "Local Option Levy"

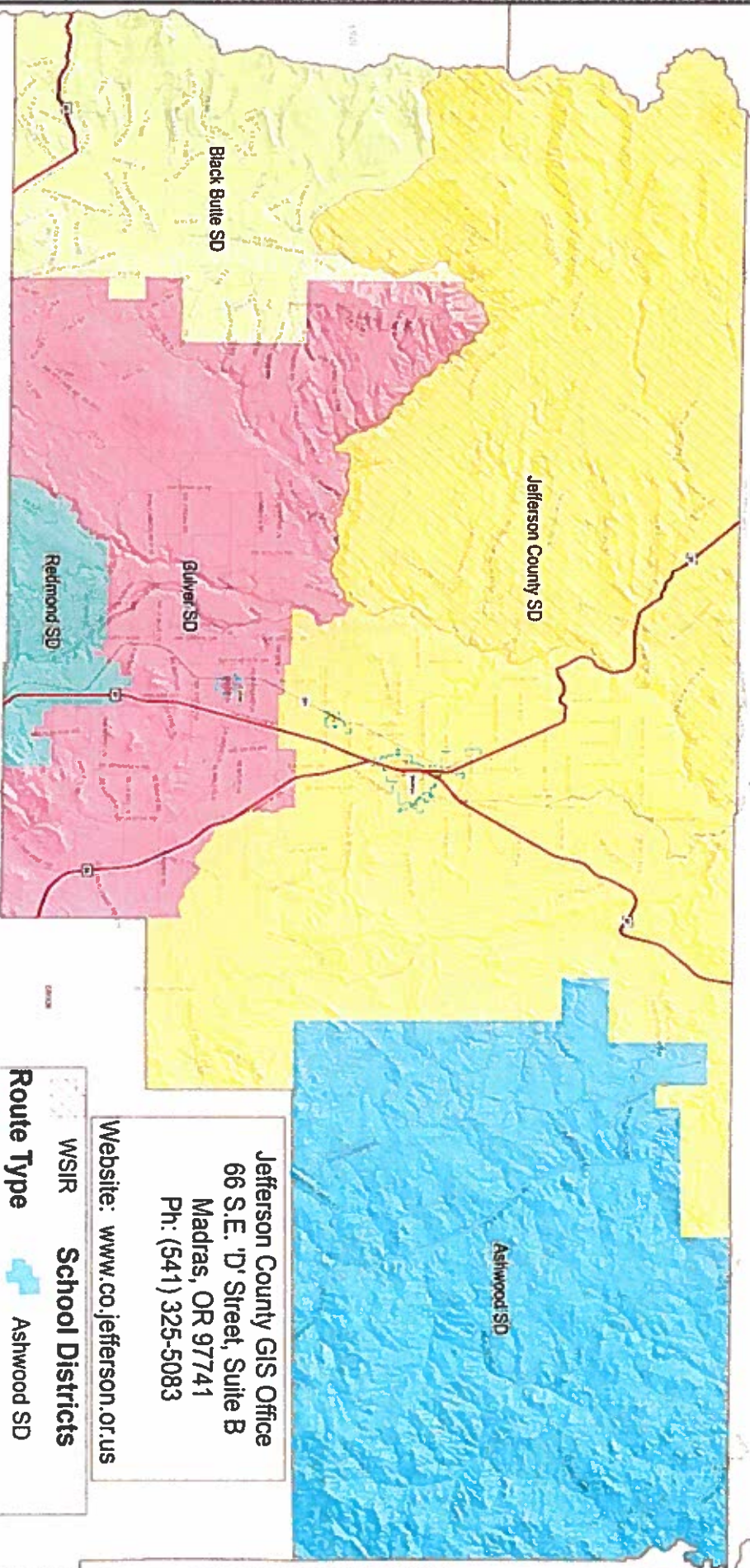
JEFFERSON COUNTY ASSESSOR'S OFFICE
 66 S.E. "D" Street, Suite D
 Madras, OR 97741
 Ph: (541) 475-2443
 Website: www.co.jefferson.or.us

2017 - 2018 Taxing District Contacts

Taxing District	Contact	Phone #	Email
Camp Sherman Road District #18	Ellen Wood	541-588-0033	woode51@msn.com
COCC	Lisa Bloyer	541-383-7711	lbloyer@cocc.edu
CRR RFPD	Harry Ward	541-923-6776	harry.ward@crrfire.org
CRR Special Road District	Clarence Palm Jr.	541-325-1290	palmclar@gmail.com
Culver - City	Nancy Diaz	541-546-6494	cityhall@cityofculver.net
Culver - City Urban Renewal District	Bill Perks	541-546-6494	cityhall@cityofculver.net
Deschutes County 911	Wayne Lowry	541-388-6559	wayne.lowry@deschutes.org
Deschutes Valley Water	Ed Pugh	541-475-3849	edson@dvwd.org
High Desert ESD	Greg Munn	541-693-5616	greg.munn@hdesd.org
Jefferson County ESD	Martha Bewley	541-475-6192	mbewley@509j.net
Jefferson County General	Brandie McNamee	541-325-0435	brandie.mcnamee@co.jefferson.or.us
Jefferson County Jail	Brandie McNamee	541-325-0435	brandie.mcnamee@co.jefferson.or.us
Jefferson County Library	DeRese Hall	541-475-3351	derese@jclcd.org
Jefferson County RFPD	Brian Huff	541-475-7274	bhuff@jcfcd-1.org
Juniper Butte Road District	Joseph Buckles	541-546-9259	buckleshome@reagan.com
Lake Chinook Fire & Rescue	Don Colfels	541-629-8911	don@lakechinookfire.org
Madras - City	Kristal Hughes	541-475-2344	khughes@ci.madras.or.us
Madras - City Urban Renewal District	Kristal Hughes	541-475-2344	khughes@ci.madras.or.us
MAC Recreation District	Joe McHaney	541-475-4253	jmchaney@macaquatic.com
Metolius - City	Carol Funk	541-546-5533	comet@crestviewcable.com
Redmond Fire & Rescue	Tim Moor	541-504-5000	tim.moor@redmondfireandrescue.org
SD #2J Redmond	Kathy Steinert	541-923-8927	kathy.steinert@redmondschools.org
SD #4 Culver	Jamie Burleigh	541-546-7504	jburleigh@culver.k12.or.us
SD #41 Black Butte	Shawn Russell	541-595-6203	srussell@blackbutte.k12.or.us
SD #509J Madras	Martha Bewley	541-475-6192	mbewley@509j.net
SD #6 Sisters	Sherry Joseph	541-549-8521	sherry.joseph@sisters.k12.or.us
SD #8 Ashwood	Mary Lewis	541-489-3297	clerk@ashwood.k12.or.us
Sisters/Camp Sherman RFPD	Roger Johnson	541-549-0771	rjohnson@sistersfire.com

Taxing Districts	Real Market Value	M5 Value	Value Used to Compute Tax	Tax Billing Rate	Local Option Levy	Imposed Tax Under M50
County General Levy	\$3,006,472,731	\$2,504,870,287	\$1,661,317,348	3.5662		\$5,921,895.75
County Jail LO Levy*	3,006,472,731	2,504,870,287	1,691,192,619		1.2400	1,907,074.45
County Library Levy	2,537,064,025	2,046,584,619	1,404,625,265	0.4349		610,560.01
City of Culver Levy	90,765,150	90,678,474	60,346,525	6.2643		373,275.89
City of Madras Levy	457,312,358	455,110,414	325,365,945	4.1262		1,342,544.35
City of Metolius Levy	39,418,180	39,357,318	28,378,121	3.6296		103,001.17
MAC Recreation District Levy	1,526,901,437	1,315,886,983	968,806,272	0.2500		242,219.94
MAC Recreation District LO Levy*	1,526,901,437	1,315,886,983	995,481,518		0.4000	343,780.16
MAC Recreation District Bond	1,526,901,437	1,315,886,983	995,481,518	0.6388		635,914.03
Jefferson County ESD Levy	2,537,064,025	2,046,584,619	1,404,625,265	0.2398		328,222.16
High Desert ESD Levy	469,408,706	458,285,668	256,692,083	0.0964		24,525.66
Jefferson County RFPD Levy	1,279,264,018	1,124,246,635	742,200,907	1.1847		879,309.64
Juniper Butte Road District	19,203,725	19,142,285	11,107,806	0.9385		10,424.66
CRR RFPD Levy	541,175,312	541,175,312	303,364,075	1.8379		557,553.08
CRR RFPD LO Levy*	541,175,312	541,175,312	303,364,075		0.6900	209,321.52
CRR RFPD Bond	541,175,312	541,175,312	303,364,075	0.3431		104,084.13
CRR Special Road Levy	533,306,502	533,306,502	299,960,985	0.8140		244,168.53
Sisters-Camp Sher RFPD Levy	160,848,854	160,318,938	89,263,066	2.7317		243,839.88
Sisters-Camp Sher RFPD Bond	160,848,854	160,318,938	89,263,066	0.1991		17,772.25
Redmond Fire & Rescue Levy	3,991,820	2,891,083	1,719,197	1.7542		3,015.82
Lake Chinook Fire & Rescue Levy	128,613,957	128,042,321	68,553,723	1.6500		113,113.75
Lake Chinook Fire & Rescue Bond	128,613,957	128,042,321	68,553,723	0.6190		42,434.66
COCC Levy	3,006,472,731	2,504,870,287	1,661,317,348	0.6204		1,006,931.79
COCC Bond	3,006,472,731	2,504,870,287	1,691,192,619	0.1206		203,958.34
SD#41 Black Butte Levy	175,057,294	168,192,391	92,055,935	3.0137		277,428.91
SD#4 Culver Levy	624,223,294	541,359,547	333,039,465	4.8766		1,582,078.15
SD#4 Culver Bond	624,223,294	541,359,547	336,239,490	2.1379		718,846.58
SD#509J Madras Levy	1,526,901,437	1,315,886,983	968,806,272	4.5871		4,318,365.01
SD#509J Madras Bond	1,526,901,437	1,315,886,983	995,481,518	2.5013		2,489,998.13
SD#2J Redmond Levy	468,794,886	457,671,848	256,118,963	5.0251		1,275,595.90
SD#2J Redmond Bond	468,794,886	457,671,848	256,118,963	2.4490		627,235.85
SD#6 Sisters Levy	613,820	613,820	573,120	4.0997		2,349.62
SD#6 Sisters LO Levy*	613,820	613,820	573,120		0.7500	222.87
SD#6 Sisters Bond - 2000	613,820	613,820	573,120	1.0169		582.80
SD#6 Sisters Bond - 2016	613,820	613,820	573,120	0.3974		227.76
Camp Sherman Rd Dist #18 Levy	175,057,294	168,192,391	92,055,935	0.1389		12,786.65
Camp Sherman Rd Dist #18 LO Levy*	175,057,294	168,192,391	92,055,935		0.2000	18,411.12
Deschutes County 911 Levy	175,057,294	168,192,391	92,055,935	0.3618		33,305.86
Special Assessments, Fees & Charges						
Fire Improvement						4,417.50
Culver Delinquent Sewer						17,700.00
Fire Patrol - Timber						167,658.75
Fire Patrol - Grazing						30,179.42
MH Ombudsman Fee						5,650.00
Additional Taxes/Penalties						25,085.58
Madras Urban Renewal						400,235.63
Culver Urban Renewal						50,542.91
TOTAL TAXES & ASSESSMENTS, 2017-2018						\$27,527,846.62
*LO means Local Option						

JEFFERSON COUNTY, OREGON, SCHOOL DISTRICTS



Jefferson County GIS Office
 66 S.E. 'D' Street, Suite B
 Madras, OR 97741
 Ph: (541) 325-5083

Website: www.co.jefferson.or.us

	WSIR		School Districts
	Route Type		Ashwood SD
	Road		Black Butte SD
	City Limits		Culver SD
			Jefferson County SD
			Redmond SD