

JEFFERSON COUNTY, OREGON

SUMMARY OF ASSESSMENT & TAX ROLL 2023-24



Mt. Jefferson

Photo by : Kat Flande

<u>Property Types</u>	<u>2022-23</u> <u>Assessed Value</u>	<u>2023-24</u> <u>Assessed Value</u>
Real Property.....	1,620,799,454	1,724,002,699
Utilities.....	475,427,270	602,966,228
Personal Property.....	38,090,956	43,692,372
Personal Manufactured Structures.....	9,032,553	9,461,079
Total	2,143,350,233	2,380,122,378

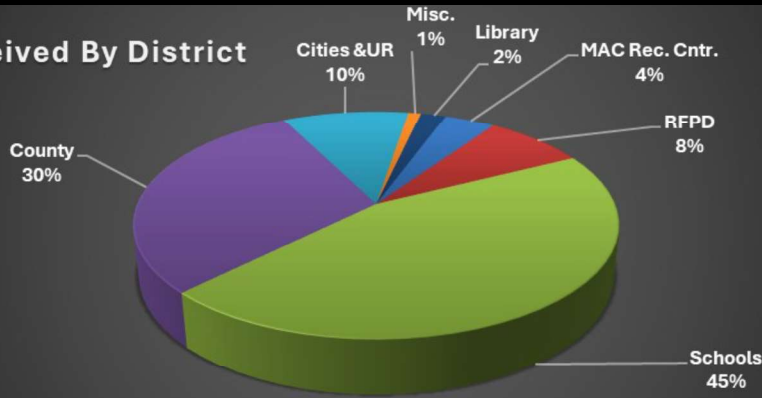
I, Ray Soliz, Assessor for Jefferson County, State of Oregon, do hereby certify the assessed valuation, tax levies, and taxes set forth in the summary herein contained, are true and correct copies of the whole thereof, as the same appears on file in my office and custody.

Dated this 4th day of October, 2023

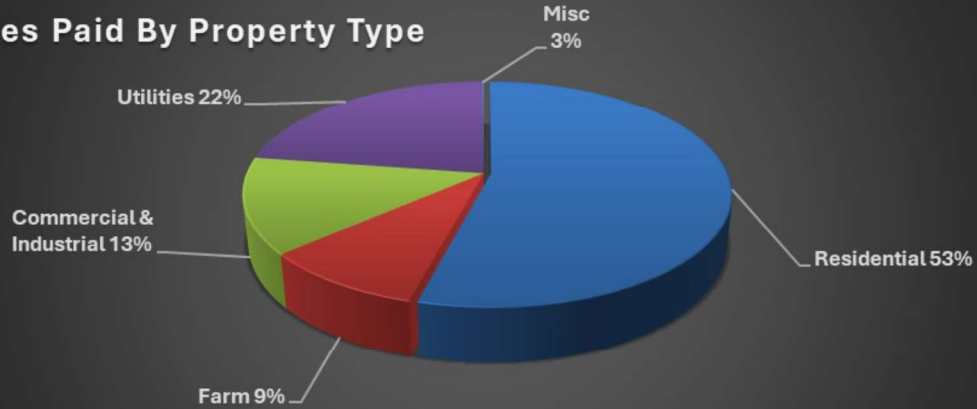
Ray Soliz

 Assessor

Taxes Received By District



Taxes Paid By Property Type



JEFFERSON COUNTY TOP 20 TAXPAYERS

Owner Name	Tax Amount	Assessed Value
Portland General Electric Company	\$ 5,278,559.40	\$ 370,549,000
Bright Wood Corporation	\$ 943,423.30	\$ 53,294,100
Pacificorp (PP&L)	\$ 889,292.90	\$ 57,514,842
Gas Transmission Northwest, LLC	\$ 554,797.55	\$ 41,042,903
Keith Investments, LLC/Manufacturing Co. Inc.	\$ 513,434.73	\$ 28,759,940
Warm Springs Power Enterprises	\$ 398,644.09	\$ 28,000,000
Daimler Trucks North America, LLC	\$ 267,295.00	\$ 13,687,164
Oregon Telephone Corporation	\$ 236,005.76	\$ 16,217,166
BNSF Railway Co.	\$ 232,748.57	\$ 14,833,212
LOVE'S Travel Stops & Country Stores Inc.	\$ 201,027.84	\$ 10,097,790
Union Pacific Railroad Co.	\$ 161,969.86	\$ 10,153,000
Pratum Co-op	\$ 145,275.34	\$ 7,987,880
Safeway Realty, LLC	\$ 140,132.60	\$ 6,984,350
Apple, Inc.	\$ 123,550.56	\$ 8,890,000
Ponderosa Land & Cattle Co., LLC.	\$ 120,261.39	\$ 2,582,253
Lumen Technologies, Inc.	\$ 108,709.73	\$ 6,681,555
Cross Keys, LLC	\$ 107,290.16	\$ 5,347,450
Cascade Natural Gas Corporation	\$ 105,045.33	\$ 6,364,421
East Cascade Retirement Community, LLC	\$ 104,348.40	\$ 5,200,830
Knight Joint Trust	\$ 102,532.31	\$ 6,675,193
Aero Air LLC, DBA Erickson Aero Tank	\$ 84,005.13	\$ 4,186,900

Code Areas

10 City of Madras	170 Outlying Culver SD#4, w/DVWD, RFPD
15 City of Madras/Urban Renewal	172 Juniper Butte Road District
18 City of Madras/Housing Urban Renewal District	200 Haystack Area
20 City of Madras w/DVWD	220 Grandview, Haystack, Grizzly, Culver SD#4
21 Special Exemption w/DVWD	221 CRR Area, Culver SD#4, w/Crooked River Ranch Road District
25 City of Madras/Urban Renewal w/DVWD	222 North Deschutes County, Sisters SD#6
28 City of Madras/Housing Urban Renewal District w/DVWD	230 W OF Opal City, S of Haystack, & Juniper Butte, Redmond SD#2J
40 Warm Springs Reservation	232 W OF Opal City, S of Haystack, Redmond SD#2J w/RFPD
70 North, East & West County w/DVWD	233 Three Rivers, Lake Chinook RFPD
80 Outlying Madras-Metolius, w/DVWD, RFPD	234 Crooked River Ranch Area, Culver SD#4, Outside CRR Road District
90 North, East & West County	240 South Culver, Hwy 97, Redmond SD#2J, w/RFPD
110 Outlying Madras-Metolius, w/DVWD, RFPD	270 Crooked River Ranch Area, Redmond SD#2J, w/CRR Road District
112 Canyon View Road District	272 Crooked River Ranch Area, Redmond SD#2J, Outside CRR Road District
118 Madras Housing Urban Renewal District Outlying w/DVWD	290 Opal City Area, Redmond SD#2J
140 City of Metolius	310 Camp Sherman
150 City of Culver	312 Camp Sherman w/Sisters-Camp Sherman RFPD
151 City of Culver/Urban Renewal District	350 Ashwood
160 Outlying Culver, SD#4, w/DVWD	

Jefferson County Taxing District Bonds & Local Option Levies

<u>Bonds</u>	<u>First Year</u>	<u>Year of Maturity</u>
Black Butte School District #41 Bond	2023	2042-2043
Central Oregon Community College Bond	2010	2031-2032
Crooked River Ranch RFPD Bond	2007	2032-2033
Culver School District #4 Bond	2014	2029-2030
Jefferson County School District #509J Bond	2013	2034-2035
Lake Chinook Fire & Rescue Bond	2014	2044-2045
MAC Recreation District Bond	2005	2026-2027
Redmond School District #2J Bond	2004	2035-2036
Redmond School District #2J Bond	2008	2034-2035
Redmond School District #2J Bond	2021	2042-2043
Sisters-Camp Sherman RFPD Bond	2007	2027-2028
Sisters School District #6 Bond	2016	2030-2031
Sisters School District #6 Bond	2021	2040-2041
<u>Local Option Levies</u>	<u>First Year</u>	<u>Expiration Date</u>
Camp Sherman Road District #18 Local Option Levy	2021	2023-2024
Crooked River Ranch RFPD Local Option Levy	2019	2023-2024
Jefferson County Jail Local Option Levy	2022	2026-2027
MAC Recreation District Local Option Levy	2023	2027-2028
Redmond Fire & Rescue Local Option Levy	2020	2024-2025
Sisters School District #6 Local Option Levy	2023	2027-2028

Billing Rates 2023-24

Code Area 10		
Real Market Value		\$352,026,200
ID Taxable Valuation		\$128,427,998
101 Jefferson County General Levy		3.0195
265 Jefferson County Jail L.O. Levy*		1.6900
645 Madras City Levy		3.4938
664 Jefferson County RFPD Levy		1.0031
675 COCC Levy		0.5254
676 COCC Bond		0.0804
678 Jefferson County SD#509J Bond 2013		2.3179
679 Jefferson County ESD Levy		0.2032
695 Jefferson County SD#509J Levy		3.8839
713 MAC Recreation District Bond		0.5662
714 MAC Recreation District Levy		0.2117
716 MAC Recreation District L.O. Levy*		0.4000
772 Jefferson County Library District Levy		0.3683
778 Madras Housing Urban Renewal		0.7624
788 Madras Urban Renewal		1.5380
M50 BILLING RATE		20.0638

Code Area 15		
Real Market Value		\$118,697,265
ID Taxable Valuation		\$51,329,727
101 Jefferson County General Levy		3.0195
265 Jefferson County Jail L.O. Levy*		1.6900
645 Madras City Levy		3.4938
664 Jefferson County RFPD Levy		1.0031
675 COCC Levy		0.5254
676 COCC Bond		0.0804
678 Jefferson County SD#509J Bond 2013		2.3179
679 Jefferson County ESD Levy		0.2032
695 Jefferson County SD#509J Levy		3.8839
713 MAC Recreation District Bond		0.5662
714 MAC Recreation District Levy		0.2117
716 MAC Recreation District L.O. Levy*		0.4000
772 Jefferson County Library District Levy		0.3683
778 Madras Housing Urban Renewal		0.7624
788 Madras Urban Renewal		1.5380
M50 BILLING RATE		20.0638

Code Area 18		
Real Market Value		\$26,367,891
ID Taxable Valuation		\$7,502,867
101 Jefferson County General Levy		3.0195
265 Jefferson County Jail L.O. Levy*		1.6900
645 Madras City Levy		3.4938
664 Jefferson County RFPD Levy		1.0031
675 COCC Levy		0.5254
676 COCC Bond		0.0804
678 Jefferson County SD#509J Bond 2013		2.3179
679 Jefferson County ESD Levy		0.2032
695 Jefferson County SD509J Levy		3.8839
713 MAC Recreation District Bond		0.5662
714 MAC Recreation District Levy		0.2117
716 MAC Recreation District L.O. Levy*		0.4000
772 Jefferson County Library District Levy		0.3683
778 Madras Housing Urban Renewal		0.7624
788 Madras Urban Renewal		1.5380
M50 BILLING RATE		20.0638

Code Area 20		
Real Market Value		\$558,922,423
ID Taxable Valuation		\$286,517,593
101 Jefferson County General Levy		3.0195
265 Jefferson County Jail L.O. Levy*		1.6900
645 Madras City Levy		3.4938
664 Jefferson County RFPD Levy		1.0031
670 Deschutes Valley Water District		0.0000
675 COCC Levy		0.5254
676 COCC Bond		0.0804
678 Jefferson County SD#509J Bond 2013		2.3179
679 Jefferson County ESD LEVY		0.2032
695 Jefferson County SD#509J LEVY		3.8839
713 MAC Recreation District Bond		0.5662
714 MAC Recreation District Levy		0.2117
716 MAC Recreation District L.O. Levy*		0.4000
772 Jefferson County Library District Levy		0.3683
778 Madras Housing Urban Renewal		0.7624
788 Madras Urban Renewal		1.5380
M50 BILLING RATE		20.0638

Code Area 21		
Real Market Value		\$10,126,629
ID Taxable Valuation		\$5,491,039
101 Jefferson County General Levy		3.0195
265 Jefferson County Jail L.O. Levy*		1.6900
645 Madras City Levy		3.4938
664 Jefferson County RFPD Levy		1.0031
670 Deschutes Valley Water District Levy		0.0000
675 COCC Levy		0.5254
676 COCC Bond		0.0804
678 Jefferson County SD#509J Bond 2013		2.3179
679 Jefferson County ESD Levy		0.2032
695 Jefferson County SD#509J Levy		3.8839
713 MAC Recreation District Bond		0.5662
714 MAC Recreation District Levy		0.2117
716 MAC Recreation District L.O. Levy*		0.4000
772 Jefferson County Library District Levy		0.3683
778 Madras Housing Urban Renewal		0.7624
788 Madras Urban Renewal		1.5380
M50 BILLING RATE		20.0638

Code Area 25		
Real Market Value		\$108,901,600
ID Taxable Valuation		\$47,341,509
101 Jefferson County General Levy		3.0195
265 Jefferson County Jail L.O. Levy*		1.6900
645 Madras City Levy		3.4938
664 Jefferson County RFPD Levy		1.0031
670 Deschutes Valley Water District Levy		0.0000
675 COCC Levy		0.5254
676 COCC Bond		0.0804
678 Jefferson County SD#509J Bond 2013		2.3179
679 Jefferson County ESD Levy		0.2032
695 Jefferson County SD#509J Levy		3.8839
713 MAC Recreation District Bond		0.5662
714 MAC Recreation District Levy		0.2117
716 MAC Recreation District L.O. Levy*		0.4000
772 Jefferson County Library District Levy		0.3683
778 Madras Housing Urban Renewal		0.7624
788 Madras Urban Renewal		1.5380
M50 BILLING RATE		20.0638

Code Area 28		
Real Market Value		\$78,732,511
ID Taxable Valuation		\$27,744,623
101 Jefferson County General Levy		3.0195
265 Jefferson County Jail L.O. Levy*		1.6900
645 Madras City Levy		3.4938
664 Jefferson County RFPD Levy		1.0031
670 Deschutes Valley Water District Levy		0.0000
675 COCC Levy		0.5254
676 COCC Bond		0.0804
678 Jefferson County SD#509J Bond 2013		2.3179
679 Jefferson County ESD Levy		0.2032
695 Jefferson County SD#509J Levy		3.8839
713 MAC Recreation District Bond		0.5662
714 MAC Recreation District Levy		0.2117
716 MAC Recreation District L.O. Levy*		0.4000
772 Jefferson County Library District Levy		0.3683
778 Madras Housing Urban Renewal		0.7624
788 Madras Urban Renewal		1.5380
M50 BILLING RATE		20.0638

Code Area 40		
Real Market Value		\$116,404,064
ID Taxable Valuation		\$114,081,201
101 Jefferson County General Levy		3.5662
265 Jefferson County Jail L.O. Levy*		1.6900
675 COCC Levy		0.6204
676 COCC Bond		0.0804
678 Jefferson County SD#509J Bond-2013		2.3179
679 Jefferson County ESD Levy		0.2398
695 Jefferson County SD#509J Levy		4.5871
713 MAC Recreation District Bond		0.5662
714 MAC Recreation District Levy		0.2500
716 MAC Recreation District L.O. Levy*		0.4000
772 Jefferson County Library District Levy		0.4349
M50 BILLING RATE		14.7529

Code Area 70		
Real Market Value		\$128,547,284
ID Taxable Valuation		\$50,504,378
101 Jefferson County General Levy		3.5662
265 Jefferson County Jail L.O. Levy*		1.6900
670 Deschutes Valley Water District Levy		0.0000
675 COCC Levy		0.6204
676 COCC Bond		0.0804
678 Jefferson County SD#509J Bond 2013		2.3179
679 Jefferson County ESD Levy		0.2398
695 Jefferson County SD#509J Levy		4.5871
713 MAC Recreation District Bond		0.5662
714 MAC Recreation District Levy		0.2500
716 MAC Recreation District L.O. Levy*		0.4000
772 Jefferson County Library District Levy		0.4349
M50 BILLING RATE		14.7529

Code Area 80		
Real Market Value		\$223,845,646
ID Taxable Valuation		\$60,692,099
101 Jefferson County General Levy		3.5662
265 Jefferson County Jail L.O. Levy*		1.6900
664 Jefferson County RFPD Levy		1.1847
675 COCC Levy		0.6204
676 COCC Bond		0.0804
678 Jefferson County SD#509J Bond 2013		2.3179
679 Jefferson County ESD Levy		0.2398
695 Jefferson County SD#509J Levy		4.5871
713 MAC Recreation District Bond		0.5662
714 MAC Recreation District Levy		0.2500
716 MAC Recreation District L.O. Levy*		0.4000
772 Jefferson County Library District Levy		0.4349
M50 BILLING RATE		15.9376

Code Area 90		
Real Market Value		\$524,027,366
ID Taxable Valuation		\$300,308,915
101 Jefferson County General Levy		3.5662
265 Jefferson County Jail L.O. Levy*		1.6900
675 COCC Levy		0.6204
676 COCC Bond		0.0804
678 Jefferson County SD#509J Bond 2013		2.3179
679 Jefferson County ESD Levy		0.2398
695 Jefferson County SD#509J Levy		4.5871
713 MAC Recreation District Bond		0.5662
714 MAC Recreation District Levy		0.2500
716 MAC Recreation District L.O. Levy*		0.4000
772 Jefferson County Library District Levy		0.4349
M50 BILLING RATE		14.7529

Code Area 110		
Real Market Value		\$919,157,892
ID TAXABLE VALUATION		\$302,786,407
101 Jefferson County General Levy		3.5662
265 Jefferson County Jail L.O. Levy*		1.6900
664 Jefferson County RFPD Levy		1.1847
670 Deschutes Valley Water District Levy		0.0000
675 COCC Levy		0.6204
676 COCC Bond		0.0804
678 Jefferson County SD#509J Bond 2013		2.3179
679 Jefferson County ESD Levy		0.2398
695 Jefferson County SD#509J Levy		4.5871
713 MAC Recreation District Bond		0.5662
714 MAC Recreation District Levy		0.2500
716 MAC Recreation District L.O. Levy*		0.4000
772 Jefferson County Library District Levy		0.4349
M50 BILLING RATE		15.9376

*LOL (LOCAL OPTION LEVY)

Billing Rates 2023-24

Code Area 112	
Real Market Value	\$45,082,194
ID Taxable Valuation	\$22,604,960
101 Jefferson County General Levy	3.5662
265 Jefferson County Jail L.O. Levy*	1.6900
664 Jefferson County RFPD Levy	1.1847
670 Deschutes Valley Water District Levy	0.0000
675 COCC Levy	0.6204
676 COCC Bond	0.0804
678 Jefferson County SD#509J Bond 2013	2.3179
679 Jefferson County ESD Levy	0.2398
695 Jefferson County SD#509J Levy	4.5871
706 Canyon View Road District	1.5000
713 MAC Recreation District Bond	0.5662
714 MAC Recreation District Levy	0.2500
716 MAC Recreation District L.O. Levy*	0.4000
772 Jefferson County Library District Levy	0.4349
M50 BILLING RATE	17.4376

Code Area 118	
Real Market Value	\$980,274
ID Taxable Valuation	\$145,204
101 Jefferson County General Levy	3.3850
265 Jefferson County Jail L.O. Levy*	1.6900
664 Jefferson County RFPD Levy	1.1245
670 Deschutes Valley Water District Levy	0.0000
675 COCC Levy	0.5889
676 COCC Bond	0.0804
678 Jefferson County SD#509J Bond 2013	2.3179
679 Jefferson County ESD Levy	0.2277
695 Jefferson County SD#509J Levy	4.3540
713 MAC Recreation District Bond	0.5662
714 MAC Recreation District Levy	0.2373
716 MAC Recreation District L.O. Levy*	0.4000
772 Jefferson County Library District Levy	0.4128
778 Madras Housing Urban Renewal	0.5529
M50 BILLING RATE	15.9376

Code Area 140	
Real Market Value	\$119,369,616
ID Taxable Valuation	\$43,640,501
101 Jefferson County General Levy	3.5662
265 Jefferson County Jail L.O. Levy*	1.6900
647 Metolius City Levy	3.6296
664 Jefferson County RFPD Levy	1.1847
670 Deschutes Valley Water District Levy	0.0000
675 COCC Levy	0.6204
676 COCC Bond	0.0804
678 Jefferson County SD#509J Bond 2013	2.3179
679 Jefferson County ESD Levy	0.2398
695 Jefferson County SD#509J Levy	4.5871
713 MAC Recreation District Bond	0.5662
714 MAC Recreation District Levy	0.2500
716 MAC Recreation District L.O. Levy*	0.4000
772 Jefferson County Library District Levy	0.4349
M50 BILLING RATE	19.5672

Code Area 150	
Real Market Value	\$202,117,484
ID Taxable Valuation	\$76,073,580
101 Jefferson County General Levy	3.3384
265 Jefferson County Jail L.O. Levy*	1.6900
635 Culver City Levy	5.8642
670 Deschutes Valley Water District Levy	0.0000
675 COCC Levy	0.5808
676 COCC Bond	0.0804
679 Jefferson County ESD Levy	0.2245
685 Culver School District #4 Levy	4.5651
687 Culver School District #4 Bond	1.9415
772 Jefferson County Library District Levy	0.4072
798 Culver Urban Renewal	1.0220
M50 BILLING RATE	19.7141

CODE AREA 151	
Real Market Value	\$26,119,207
ID Taxable Valuation	\$12,927,767
101 Jefferson County General Levy	3.3384
265 Jefferson County Jail L.O. Levy*	1.6900
635 Culver City Levy	5.8642
670 Deschutes Valley Water District Levy	0.0000
675 COCC Levy	0.5808
676 COCC Bond	0.0804
679 Jefferson County ESD Levy	0.2245
685 Culver School District #4 Levy	4.5651
687 Culver School District #4 Bond	1.9415
772 Jefferson County Library District Levy	0.4072
798 Culver Urban Renewal	1.0220
M50 BILLING RATE	19.7141

Code Area 160	
Real Market Value	\$16,834,624
ID Taxable Valuation	\$11,785,867
101 Jefferson County General Levy	3.5662
265 Jefferson County Jail L.O. Levy	1.6900
670 Deschutes Valley Water District Levy	0.0000
675 COCC Levy	0.6204
676 COCC Bond	0.0804
679 Jefferson County ESD Levy	0.2398
685 Culver School District #4 Levy	4.8766
687 Culver School District #4 Bond	1.9415
772 Jefferson County Library District Levy	0.4349
M50 BILLING RATE	13.4498

Code Area 170	
Real Market Value	\$317,841,488
ID Taxable Valuation	\$96,101,111
101 Jefferson County General Levy	3.5662
265 Jefferson County Jail L.O. Levy	1.6900
664 Jefferson County RFPD Levy	1.1847
670 Deschutes Valley Water District Levy	0.0000
675 COCC Levy	0.6204
676 COCC Bond	0.0804
679 Jefferson County ESD Levy	0.2398
685 Culver School District #4 Levy	4.8766
687 Culver School District #4 Bond	1.9415
772 Jefferson County District Library Levy	0.4349
M50 BILLING RATE	14.6345

Code Area 172	
Real Market Value	\$35,558,977
ID Taxable Valuation	\$14,096,997
101 Jefferson County General Levy	3.5662
265 Jefferson County Jail L.O. Levy	1.6900
664 Jefferson County RFPD Levy	1.1847
670 Deschutes Valley Water District Levy	0.0000
675 COCC Levy	0.6204
676 COCC Bond	0.0804
679 Jefferson County ESD Levy	0.2398
685 Culver School District #4 Levy	4.8766
687 Culver School District #4 Bond	1.9415
700 Juniper Butte Road District	0.9385
772 Jefferson County Library District Levy	0.4349
M50 BILLING RATE	15.5730

Code Area 200	
Real Market Value	\$32,053,903
ID Taxable Valuation	\$7,739,271
101 Jefferson County General Levy	3.5662
265 Jefferson County Jail L.O. Levy*	1.6900
664 Jefferson County RFPD Levy	1.1847
675 COCC Levy	0.6204
676 COCC Bond	0.0804
679 Jefferson County ESD Levy	0.2398
685 Culver School District #4 Levy	4.8766
687 Culver School District #4 Bond	1.9415
772 Jefferson County Library District Levy	0.4349
M50 BILLING RATE	14.6345

Code Area 220	
Real Market Value	\$149,535,373
ID Taxable Valuation	\$53,013,726
101 Jefferson County General Levy	3.5662
265 Jefferson County Jail L.O. Levy*	1.6900
675 COCC Levy	0.6204
676 COCC Bond	0.0804
679 Jefferson County ESD Levy	0.2398
685 Culver School District #4 Levy	4.8766
687 Culver School District #4 Bond	1.9415
772 Jefferson County Library District Levy	0.4349
M50 BILLING RATE	13.4498

Code Area 221	
Real Market Value	\$260,267,420
ID Taxable Valuation	\$84,908,618
101 Jefferson County General Levy	3.5662
265 Jefferson County Jail L.O. Levy*	1.6900
662 Crooked River Ranch RFPD L.O. Levy*	0.8900
663 Crooked River Ranch RFPD Levy	1.8379
675 COCC Levy	0.6204
676 COCC Bond	0.0804
679 Jefferson County ESD Levy	0.2398
685 Culver School District #4 Levy	4.8766
687 Culver School District #4 Bond	1.9415
698 Crooked River Ranch Road District	0.8140
772 Jefferson County Library District Levy	0.4349
796 Crooked River Ranch RFPD-Bond	0.4643
M50 BILLING RATE	17.4560

Code Area 222	
Real Market Value	\$1,606,750
ID Taxable Valuation	\$742,130
101 Jefferson County General Levy	3.5662
265 Jefferson County Jail L.O. Levy*	1.6900
675 COCC Levy	0.6204
676 COCC Bond	0.0804
681 High Desert ESD Levy	0.0964
744 Sisters School District #6 Levy	4.0997
747 Sisters School District #6 L.O. Levy*	0.7500
748 Sisters School District #6 Bond 2016	0.3474
749 Sisters School District #6 Bond 2021	0.8953
M50 BILLING RATE	12.1458

Code Area 230	
Real Market Value	\$37,609,767
ID Taxable Valuation	\$11,594,223
101 Jefferson County General-Levy	3.5662
265 Jefferson County Jail L.O. Levy*	1.6900
675 COCC Levy	0.6204
676 COCC Bond	0.0804
681 High Desert ESD Levy	0.0964
683 Redmond School Dist. #2J Levy	5.0251
723 Redmond School Dist.#2J Bond	2.2575
M50 BILLING RATE	13.3360

Code Area 232	
Real Market Value	\$23,043,073
ID Taxable Valuation	\$7,204,575
101 Jefferson County General Levy	3.5662
265 Jefferson County Jail L.O. Levy*	1.6900
675 COCC Levy	0.6204
676 COCC Bond	0.0804
681 High Desert ESD Levy	0.0964
683 Redmond School District #2J Levy	5.0251
723 Redmond School District #2J Bond	2.2575
757 Redmond Fire & Rescue Levy	1.7542
758 Redmond Fire & Rescue L.O. Levy*	0.2700
M50 BILLING RATE	15.3602

*LOL (LOCAL OPTION LEVY)

Billing Rates 2023-24

Code Area 233	
Real Market Value	\$353,147,563
ID Taxable Valuation	\$106,142,105
101 Jefferson County General Levy	3.5662
265 Jefferson County Jail L.O. Levy	1.6900
675 COCC Levy	0.6204
676 COCC Bond	0.0804
679 Jefferson County ESD Levy	0.2398
685 Culver School District #4 Levy	4.8766
687 Culver School District #4 Bond	1.9415
711 Lake Chinook Fire & Rescue Bond	0.3780
733 Lake Chinook Fire & Rescue Levy	1.6500
772 Jefferson County Library District Levy	0.4349
M50 BILLING RATE	15.4778

Code Area 234	
Real Market Value	\$85,550
ID Taxable Valuation	\$1,610
101 Jefferson County General Levy	3.5662
265 Jefferson County Jail L.O. Levy*	1.6900
662 Crooked River Ranch RFPD L.O. Levy*	0.8900
663 Crooked River Ranch RFPD Levy	1.8379
675 COCC Levy	0.6204
676 COCC Bond	0.0804
679 Jefferson County ESD Levy	0.2398
685 Culver School District #4 Levy	4.8766
687 Culver School District #4 Bond	1.9415
772 Jefferson County Library District Levy	0.4349
796 Crooked River Ranch RFPD Bond	0.4643
M50 BILLING RATE	16.6420

Code Area 240	
Real Market Value	\$44,292,619
ID Taxable Valuation	\$12,951,946
101 Jefferson County General Levy	3.5662
265 Jefferson County Jail L.O. Levy*	1.6900
664 Jefferson County RFPD Levy	1.1847
675 COCC Levy	0.6204
676 COCC Bond	0.0804
681 High Desert ESD Levy	0.0964
683 Redmond School District #2J Levy	5.0251
723 Redmond School District #2J Bond	2.2575
M50 BILLING RATE	14.5207

Code Area 270	
Real Market Value	\$960,579,285
ID Taxable Valuation	\$301,278,152
101 Jefferson County General Levy	3.5662
265 Jefferson County Jail L.O. Levy*	1.6900
662 Crooked River Ranch L.O. Levy*	0.8900
663 Crooked River Ranch Levy	1.8379
675 COCC LEVY	0.6204
676 COCC Bond	0.0804
681 High Desert ESD Levy	0.0964
683 Redmond School District #2J Levy	5.0251
698 Crooked River Road District Levy	0.8140
723 Redmond School District #2J Bond	2.2575
796 Crooked River Ranch RFPD Bond	0.4643
M50 BILLING RATE	17.3422

Code Area 272	
Real Market Value	\$25,264,930
ID Taxable Valuation	\$5,138,050
101 Jefferson County General Levy	3.5662
265 Jefferson County Jail L.O. Levy*	1.6900
662 Crooked River Ranch RFPD L.O. Levy*	0.8900
663 Crooked River Ranch RFPD Levy	1.8379
675 COCC Levy	0.6204
676 COCC Bond	0.0804
681 High Desert ESD Levy	0.0964
683 Redmond School District #2J Levy	5.0251
723 Redmond School District #2J Bond	2.2575
796 Crooked River Ranch RFPD Bond	0.4643
M50 BILLING RATE	16.5282

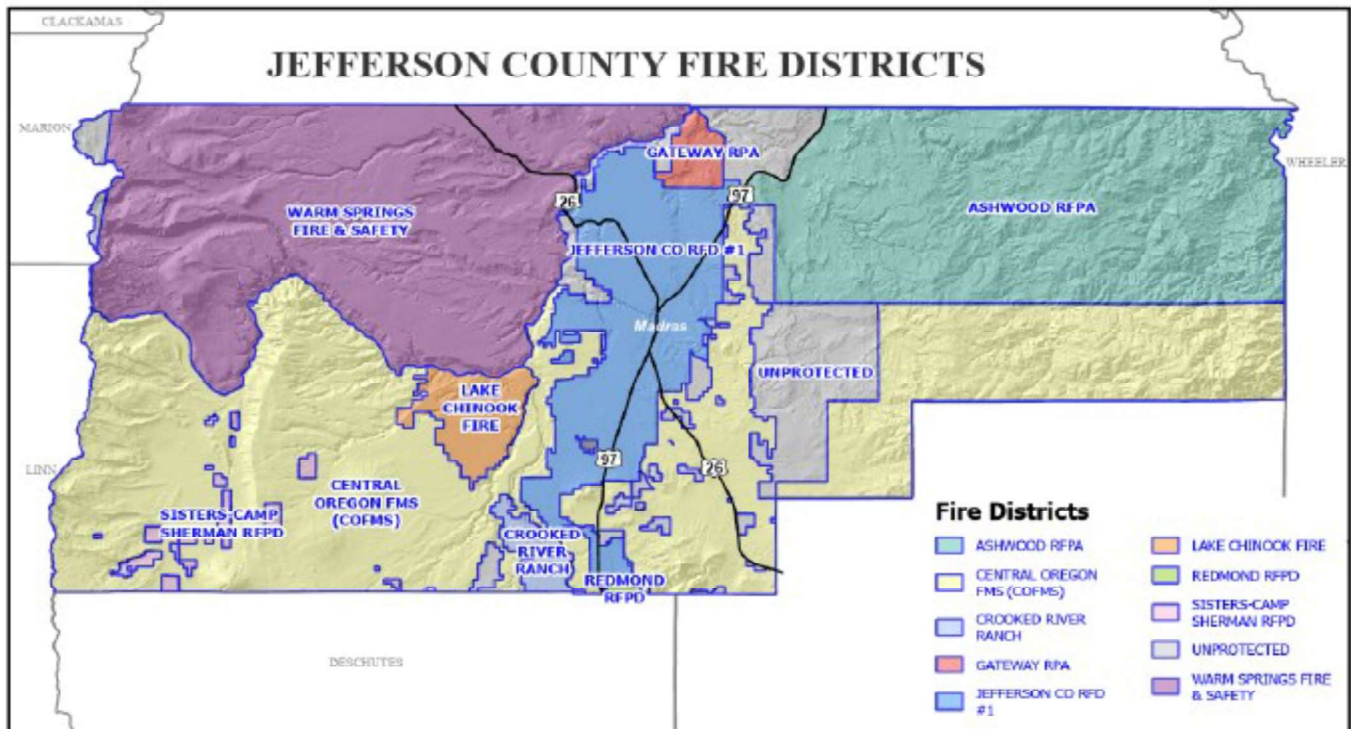
Code Area 290	
Real Market Value	\$1,272,036
ID Taxable Valuation	\$503,594
101 Jefferson County General Levy	3.5662
265 Jefferson County Jail L.O. Levy*	1.6900
664 Jefferson County RFPD Levy	1.1847
670 Deschutes Valley Water District Levy	0.0000
675 COCC Levy	0.6204
676 COCC Bond	0.0804
681 High Desert ESD Levy	0.0964
683 Redmond School District #2J Levy	5.0251
723 Redmond School District #2J Bond	2.2575
M50 BILLING RATE	14.5207

Code Area 310	
Real Market Value	\$28,508,083
ID Taxable Valuation	\$3,593,255
101 Jefferson County General Levy	3.5662
265 Jefferson County Jail L.O. Levy	1.6900
675 COCC Levy	0.6204
676 COCC Bond	0.0804
679 Jefferson County ESD Levy	0.2398
689 Black Butte School Dist. #41 Bond 2023	1.1616
690 Black Butte School District #41 Levy	3.0137
743 Deschutes County 911 Levy	0.3618
761 Camp Sherman Road District Levy	0.1389
762 Camp Sherman Road District L.O. Levy*	0.2000
772 Jefferson County Library District Levy	0.4349
M50 BILLING RATE	11.5077

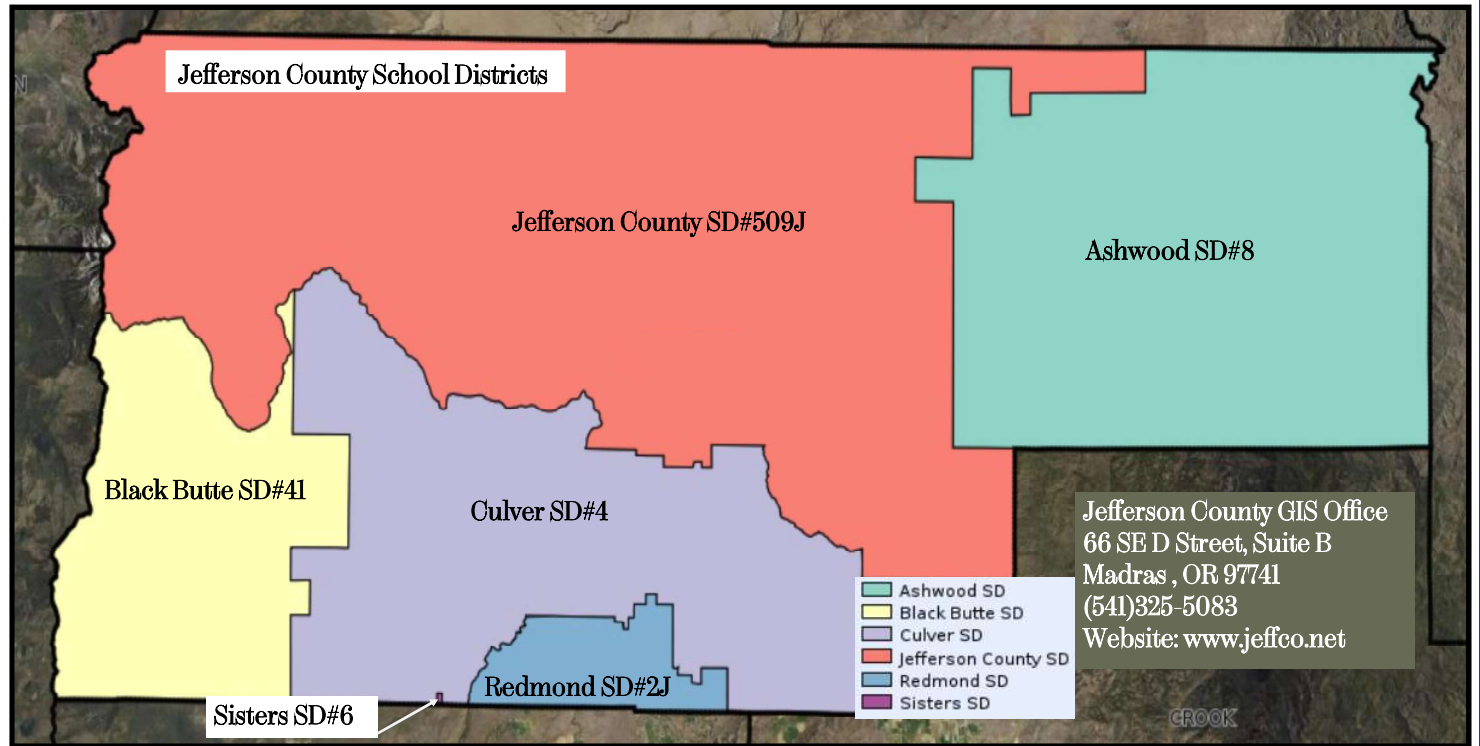
Code Area 312	
Real Market Value	\$360,466,049
ID Taxable Valuation	\$111,756,673
101 Jefferson County General Levy	3.5662
265 Jefferson County Jail L.O. Levy	1.6900
659 Sisters/Camp Sherman RFPD Levy	2.7317
675 COCC Levy	0.6204
676 COCC Bond	0.0804
679 Jefferson County ESD Levy	0.2398
689 Black Butte School Dist. #41 Bond 2023	1.1616
690 Black Butte School District #41 Levy	3.0137
743 Deschutes County 911 Levy	0.3618
752 Sisters/Camp Sherman RFPD Bond	0.1596
761 Camp Sherman Road District #18 Levy	0.1389
762 Camp Sherman Road District #18 L.O. Levy*	0.2000
772 Jefferson County Library District Levy	0.4349
M50 BILLING RATE	14.3990

Code Area 350	
Real Market Value	\$426,468,631
ID Taxable Valuation	\$13,450,107
101 Jefferson County General Levy	3.5662
265 Jefferson County Library District Levy	1.6900
675 COCC Levy	0.6204
676 COCC Bond	0.0804
679 Jefferson County ESD Levy	0.2398
688 Ashwood School District #8 Levy	0.0000
772 Jefferson County Library District Levy	0.4349
M50 BILLING RATE	6.6317

*LOL (LOCAL OPTION LEVY)



ID	TAXING DISTRICT	REAL MARKET VALUE	M5 VALUE	VALUES USED TO COMPUTE TAX	TAX BILLING RATE	*LOCAL OPTION LEVY	IMPOSED TAX UNDER M50
101	Jefferson County General Levy	\$ 6,633,861,667	\$ 5,485,198,395	\$ 2,289,433,231	3.5662		\$ 8,147,297.44
265	Jefferson County Jail L.O. Levy*	\$ 6,633,861,667	\$ 5,485,198,395	\$ 2,380,122,378		1.6900	\$ 3,771,893.75
635	Culver City Levy	\$ 228,236,691	\$ 227,906,075	\$ 83,315,485	6.2643		\$ 516,503.74
645	Madras City Levy	\$ 1,253,774,519	\$ 1,248,274,176	\$ 469,383,325	4.1262		\$ 1,920,421.96
647	Metolius City Levy	\$ 119,369,616	\$ 119,089,919	\$ 43,640,501	3.6296		\$ 158,397.21
659	Sisters/Camp Sherman RFPD Levy	\$ 360,466,049	\$ 359,482,303	\$ 111,756,673	2.7317		\$ 305,285.79
662	CRR RFPD L.O. Levy*	\$ 1,246,197,185	\$ 1,246,197,185	\$ 391,326,430		0.8900	\$ 348,279.39
663	CRR RFPD Levy	\$ 1,246,197,185	\$ 1,246,197,185	\$ 391,326,430	1.8379		\$ 719,218.65
664	Jefferson County RFPD Levy	\$ 2,993,229,164	\$ 2,525,977,786	\$ 1,030,614,161	1.1847		\$ 1,216,260.68
675	COCC Levy	\$ 6,633,861,667	\$ 5,485,198,395	\$ 2,289,433,231	0.6204		\$ 1,388,156.43
676	COCC Bond	\$ 6,633,861,667	\$ 5,485,198,395	\$ 2,380,122,378	0.0804		\$ 191,361.89
678	Jefferson County SD#509J Bond 2013	\$ 3,331,188,855	\$ 2,792,330,835	\$ 1,449,119,021	2.3179		\$ 3,358,913.20
679	Jefferson County ESD Levy	\$ 5,540,193,207	\$ 4,420,765,273	\$ 1,950,020,561	0.2398		\$ 455,796.66
681	High Desert ESD Levy	\$ 1,093,668,460	\$ 1,064,433,122	\$ 339,412,670	0.0964		\$ 32,492.68
683	Redmond School District #2J Levy	\$ 1,092,061,710	\$ 1,062,826,372	\$ 338,670,540	5.0251		\$ 1,690,035.59
685	Culver School District #4 Levy	\$ 1,393,561,589	\$ 1,210,830,004	\$ 457,104,790	4.8766		\$ 2,172,297.40
687	Culver School District #4 Bond	\$ 1,393,561,589	\$ 1,210,830,004	\$ 462,790,652	1.9415		\$ 898,507.92
689	Black Butte School Dist. #41 Bond 2023	\$ 388,974,132	\$ 379,888,259	\$ 115,349,928	1.1616		\$ 133,990.49
690	Black Butte School District #41 Levy	\$ 388,974,132	\$ 379,888,259	\$ 115,349,928	3.0137		\$ 347,629.94
695	Jefferson Co. School Dist. #509J Levy	\$ 3,331,188,855	\$ 2,792,330,835	\$ 1,364,115,736	4.5871		\$ 6,082,968.02
698	CRR Special Road Levy	\$ 1,220,846,705	\$ 1,220,846,705	\$ 386,186,770	0.8140		\$ 314,355.86
700	Juniper Butte Road District	\$ 35,558,977	\$ 35,440,147	\$ 14,096,997	0.9385		\$ 13,230.06
706	Canyon View Road District	\$ 45,082,194	\$ 44,766,395	\$ 22,604,960	1.5000		\$ 33,907.66
711	Lake Chinook Fire & Rescue Bond	\$ 353,147,563	\$ 352,570,827	\$ 106,142,105	0.3780		\$ 40,121.70
713	MAC Recreation Dist. Bond	\$ 3,331,188,855	\$ 2,792,330,835	\$ 1,449,119,021	0.5662		\$ 820,491.30
714	MAC Recreation Dist. Levy	\$ 3,331,188,855	\$ 2,792,330,835	\$ 1,364,115,736	0.2500		\$ 340,050.28
716	MAC Recreation Dist. L.O. Levy*	\$ 3,331,188,855	\$ 2,792,330,835	\$ 1,449,119,021		0.4000	\$ 527,230.62
723	Redmond School District #2J Bond	\$ 1,092,061,710	\$ 1,062,826,372	\$ 338,670,540	2.2575		\$ 764,548.93
733	Lake Chinook Fire & Rescue Levy	\$ 353,147,563	\$ 352,570,827	\$ 106,142,105	1.6500		\$ 175,134.86
743	Deschutes County 911 Levy	\$ 388,974,132	\$ 379,888,259	\$ 115,349,928	0.3618		\$ 41,733.70
744	Sisters School District #6 Levy	\$ 1,606,750	\$ 1,606,750	\$ 742,130	4.0997		\$ 3,042.50
747	Sisters School District #6 L.O. Levy*	\$ 1,606,750	\$ 1,606,750	\$ 742,130		0.7500	\$ 543.28
748	Sisters School District #6 Bond 2016	\$ 1,606,750	\$ 1,606,750	\$ 742,130	0.3474		\$ 257.82
749	Sisters School District #6 Bond 2021	\$ 1,606,750	\$ 1,606,750	\$ 742,130	0.8953		\$ 664.43
752	Sisters/Camp Sherman RFPD Bond	\$ 360,466,049	\$ 359,482,303	\$ 111,756,673	0.1596		\$ 17,836.47
757	Redmond Fire & Rescue Levy	\$ 23,043,073	\$ 19,923,515	\$ 7,204,575	1.7542		\$ 12,638.27
758	Redmond Fire & Rescue L.O. Levy*	\$ 23,043,073	\$ 19,923,515	\$ 7,204,575		0.2700	\$ 1,945.25
761	Camp Sherman Rd. Dist.#18 Levy	\$ 388,974,132	\$ 379,888,259	\$ 115,349,928	0.1389		\$ 16,022.03
762	Camp Sherman Rd. Dist.#18 L.O. Levy*	\$ 388,974,132	\$ 379,888,259	\$ 115,349,928		0.2000	\$ 23,069.94
772	Jefferson County Library Dist. Levy	\$ 5,540,193,207	\$ 4,420,765,273	\$ 1,950,020,561	0.4349		\$ 846,002.33
796	CRR RFPD Bond	\$ 1,246,197,185	\$ 1,246,197,185	\$ 391,326,430	0.4643		\$ 181,692.98
778	Madras Housing Urban Renewal			\$ 28,185,205			\$ 419,145.45
788	Madras Urban Renewal			\$ 56,818,080			\$ 845,385.82
798	Culver Urban Renewal			\$ 5,685,862			\$ 90,015.39
Special Assessment, Fees & Charges							
	Fire Improvement						\$ 4,417.50
	Culver Delinquent Sewer						\$ 16,155.00
	Madras Delinquent Sewer						\$ 28,533.05
	Fire Patrol-Timber						\$ 266,918.99
	Fire Patrol-Grazing						\$ 62,451.79
	MH Ombudsman Fee						\$ 4,982.23
	Additional Taxes/Penalties						\$ 32,996.82
Total Taxes & Assessments, 2023-24							\$ 39,801,231.14



2023-24 TAXING DISTRICT CONTACTS

TAXING DISTRICTS	CONTACTS	PHONE #	EMAIL
Ashwood School District #8	Lynnsay Jacobs	541-489-3297	clerk@ashwood.k12.or.us
Black Butte School District #41	Simon Levear	541-595-6203 X2	slevear@blackbutte.k12.or.us
Camp Sherman Road District #18	Ellen Wood	503-781-6293	woode51@msn.com
Canyon View Special Road District	Heather Mehlberg	541-980-6649	canyonviewsrd@gmail.com
COCC	Cathleen Knutson	541-383-7711	cknutson@cocc.edu
Crooked River RFPD District	Sean Hartley	541-923-6776	sean.hartley@crrfire.org
CRR Special Road District	Jeff Parcel		jparcel.crrsd@gmail.com
Culver School District #4	Megan Vervaecke	541-546-7504	mvervaecke@culver.k12.or.us
Culver-City	Donna McCormack	541-546-6494	cityhall@cityofculver.net
Culver-City Urban Renewal District	Jered Reid	541-447-3910	jeredwreid@gmail.com
Deschutes County 911	Robert Tintle	541-388-6559	Robert.tintle@deschutes.org
Deschutes Valley Water District	Joan Moe	541-475-3849	jmoe@dvwd.org
High Desert ESD	Rochelle Duncan-Friend	541-693-5623	rochelle.friend@hdesd.org
Jefferson County School Dist. #509J	Stacie Holmstrom	541-475-6192 X2210	shomstrom@509j.net
Jefferson County ESD	Martha Bewley	541-475-4804	mbewley@jcesd.k12.or.us
Jefferson County General	Jeff Rasmussen	541-475-2449	jrasmussen@jeffco.net
Jefferson County Jail	Jeff Rasmussen	541-475-2449	jrasmussen@jeffco.net
Jefferson County Library	Jane Ellen Innes	541-475-3351	jane@jclcd.org
Jefferson County RFPD	Jeffrey Blake	541-475-7274	jblake@cjfire-ems.org
Juniper Butte Road District	Joanne Heare	541-546-4502	heare@cbbmail.com
Lake Chinook Fire & Rescue	Don Colfels	541-629-8911	don@lakechinookfire.org
MAC Recreation District	Courtney Snead	541-475-4253 X1041	excutedirector@macredistrict.com
Madras-City	Will Ibershof	541-475-2344	wibershof@cityofmadras.us
Madras-City Housing Urban Renewal	Rose Vanderschaegen	541-475-2344	rvanderschaegen@cityofmadras.us
Madras-City Urban Renewal District	Rose Vanderschaegen	541-475-2344	rvanderschaegen@cityofmadras.us
Metolius-City	Tasha Alegre	541-546-5533	metolius1911@gmail.com
Redmond Fire & Rescue	Tracy Stabler	541-504-5041	tracy.stabler@rdmfire.org
Redmond School District #2J	Kathy Steinert	541-923-8927	kathy.steinert@redmondschools.org
Sisters School District #6	Sherry Joseph	541-549-8521 X5012	sherryjoseph@ssd6.org
Sisters/Camp Sherman RFPD	Roger Johnson	541-549-0771	rjohnson@sistersfire.com